

Transmittal 64, Volume XI
Title II
March 1, 1985

**GUIDE TO JUDICIARY POLICIES AND PROCEDURES
SARD TRANSMITTALS - AS OF MARCH 1, 1985**

Title	Trans. Number	Date Issued	Subject/ Instruction	For Information Call FTS 633-
I	41 46	4/19/82 7/8/82	Criminal - JS 1,2,3 "	6119
II	64	3/1/85	Civil - JS 5, 6, 9	6138
III	44	7/1/82	Trials - JS 10, 10A	6138
IV	60	6/15/84	Petit Jury - JS 11	6036
V	8	6/1/78	Grand Jury - JS 11G	6036
VI	-	-	(Unspecified)	6196
VII	50	11/1/82	Fed. Def. - JS 50	6036
VIII	-	-	Probation - Form 3, Form 3a, Form 9	6119
IX	-	-	-	-
X	59 62	6/15/84 7/1/84	Cts. of Appeals JS 30, 34, 34A	6138
XI	-	-	Special	-
App. A	39	3/1/82	Dist/Off. Codes	6539
App. B	61	7/1/84	Judge Codes	6539
App. C	63	8/1/84	Magistrate Codes	6539/6251
App. D	43	5/14/82	County Codes	6539
App. E	40	4/10/82	Std. Docket Num.	6539
App. F	58	10/17/83	Inactive Judge Codes	6539

The SARD Volume XI transmittals listed below are all that are required to bring your manual up to date. To obtain additional copies of Volume XI transmittals, complete this form and mail it to:

Mr. Samuel Moy (SARD)
 Administrative Office of the U.S. Courts
 Washington, DC 20544

Trans. Number	No. of Copies	Trans. Number	No. of Copies
8	_____	50	_____
39	_____	58	_____
40	_____	59	_____
41	_____	60	_____
43	_____	61	_____
44	_____	62	_____
46	_____	63	_____
		64	_____

Mail the above requested transmittals to:

```

*****
*
*
*
*
*
*
*
*
*
*
*
*
*
*
*
*
*
*
*
*
*
*****
  
```

(Please enclose a self-addressed "peel-off" pressure-sensitive label. This will help us respond more quickly to your request.)

Also available are the following supplementary materials not included in the **Statistical Analysis Manual**:

1. Civil Citations Manual, Vol. I and II _____ copies
2. Criminal Offense Citations _____ copies
3. U.S. map showing court boundaries _____ copies

Transmittal 64, Volume XI
Title II
March 1, 1985

VOLUME XI - TITLE II

**STATISTICAL ANALYSIS MANUAL
INSTRUCTIONS FOR COMPLETING
DISTRICT COURT REPORT FORMS**

DC-111 (including JS-5 and JS-6),

JS-5A, JS-6A, JS-9, JS-9C, JS-44A, JS-44B, and JS-44C

TABLE OF CONTENTS

	Page
Foreword	v
I. General Instructions	1
A. Civil Actions to Be Reported.....	1
1. Definition of a Civil Action.....	1
2. Report Criteria	1
3. Examples of Actions To Be Reported	2
4. Ancillary and Supplementary Proceedings Not Defined as Civil Actions	3
B. Reporting Forms	4
1. JS-5 Filing Report	4
2. JS-5A Filing Report	5
3. JS-6 Termination Report.....	5
4. JS-6A Termination Report	5
5. JS-9 Monthly Report of Civil Cases	5
6. JS-9C Monthly Report of Judge and Magistrate Reassignments.....	5
7. JS-44 Civil Cover Sheet	6
a. JS-44A	6
b. JS-44B	6
c. JS-44C	6
C. Reporting Requirements	7
1. Content of Monthly Report Package	7
2. Transmission of Report Packages.....	7

	Page
II. Specific Instructions	8
A. Instructions for Completing DC-111 District Court Docket and Related Forms	8
1. DC-111	8
2. JS-5 (and JS-5A)	8
a. District	9
b. Office	9
c. Docket Number	9
d. Filing Date	10
e. Jurisdiction	11
f. Nature of Suit	12
g. Origin	13
h. Diversity	14
i. Rule 23 (Class Action)	15
j. Demand	15
k. Judge Number	16
l. Magistrate Number	16
m. County	16
n. Plaintiffs	17
o. Defendants	17
p. Cause	18
3. JS-6 (and JS-6A)	18
a. Termination Date	19
b. Rule 23 (Class Action)	19
c. Judge Number	20
d. Magistrate Number	20
e. Procedural Progress at Termination	20
f. Show Dates	23
g. Disposition	24
h. Nature of Judgment	26
i. Judgment For	27
j. Involvement of U.S. Magistrate	28
k. Involvement Other Than Judge or Magistrate	28

	Page
B. Instructions for Completing JS-9 Summary Report Forms	28
1. JS-9	28
a. Part I	28
b. Part II	30
c. Part III	31
d. Part IV	32
e. Person Submitting Report	32
2. JS-9C	32
a. Identification Data	33
b. Completed Reports	33
C. Instructions for Completing JS-44A, JS-44B, and JS-44C Civil Cover Sheets	34
III. Special Instructions	35
A. Land Condemnation Cases	35
B. Bankruptcy Appeals and Withdrawals	35
1. Appeals	35
2. Withdrawals	35
C. Motions to Vacate Sentence	36
1. Filing a Motion	36
2. Disposing of a Motion	36
D. Intra-district Transfers	37
E. Reopened or Remanded Actions	37
1. JS-5 or JS-5A Filing Report	37
a. Docket Number	37
b. Filing Date	37
c. Origin	38

	Page
2. JS-6 or JS-6A Termination Report	38
a. Termination Date	38
b. Procedural Progress at Termination	38
F. Multidistrict Litigation	38
G. Magistrate Appeals	39
1. Docket Number	40
2. Filing Date	40
3. Origin	40
4. Plaintiff	40
5. Defendant	40
H. Three-Year-Old Cases	40

EXHIBITS

Exhibit A	Administrative Agency Codes	43
Exhibit B	Commonly Used Statutes	45
Exhibit C	Instructions for Completing the JS-44	51
Exhibit D	Samples of JS-5	55
Exhibit E	Samples of JS-6	65
Exhibit F	DC-111 District Court Docket	77
Exhibit G	JS-44 Civil Cover Sheets	79
Exhibit H	Sample of JS-9	85
Exhibit I	Sample of JS-9C	87
Exhibit J	Nature of Suit Codes	89

FOREWORD

The statistical report forms submitted by the district courts are used to provide information for the **Annual Report of the Director** to the Judicial Conference pursuant to Title 28 Section 604(a)(3) and for special reports for Congress and others.

These instructions discuss the completion of all report forms related to civil cases filed and disposed of in the district courts. The DC-111 docket set serves as the primary basis for the civil statistical system. The docket set contains the DC-111 District Court Docket (the permanent case record for the court), the JS-5 (filing) report form, the JS-6 (termination) report form, and a court copy of the JS-6 report form. These forms are interleaved with carbons so that data elements common to all forms are automatically duplicated when the DC-111 is completed. When all data elements related to the filing of a case are completed, the JS-5 report is removed from the docket set. When the case is closed, the JS-6 report and the JS-6 court copy are removed from the docket set and the appropriate data elements are completed. The JS-5 and JS-6 reports are forwarded to the Administrative Office after completion. The original DC-111 docket sheet and the JS-6 court copy are retained by the court as a permanent record.

These instructions also discuss the procedures for completing the following district court report forms: JS-5A and JS-6A (supplemental filing and termination reports which are available in pads); JS-9 ("Monthly Report of Civil Cases by the Clerk of Court"); JS-9C Monthly Report of Judge and Magistrate Reassignments; JS-44A, JS-44B, and JS-44C ("Civil Cover Sheet" (for court use only)).

Transmittal 64, Volume XI
Title II
March 1, 1985

The clerk of court must ensure that the monthly statistical reports, consisting of the JS-9 and JS-9C (optional) monthly summary reports, the JS-5 (yellow), JS-6 (white), JS-5A (blue), and JS-6A (buff) report forms for filings and terminations, are separately arranged in docket number order and mailed to the Administrative Office (AO) within five working days of the close of the month being reported. All communications should be addressed to:

ADMINISTRATIVE OFFICE OF THE U.S. COURTS
ATTN: SARD CIVIL STATISTICS
WASHINGTON, DC 20544

Any questions or correspondence regarding these instructions should be made by letter, and mailed separately from the statistical transmittals. Should problems arise which require immediate answers, please call the Non-Criminal Branch at FTS-633-6138 (Area Code 202).

This **Guide to Judiciary Policies and Procedures** is arranged to allow the replacement of individual pages when changes to the instructions are necessary. Whenever replacement pages are provided, those sections or paragraphs which have been substantively revised will be noted by an asterisk (*) in the left margin.

**Volume XI Title II
Statistical Analysis Manual**

**Instructions For Completing the Civil Docket Set,
Form DC-111, JS-5, JS-5A, JS-6, JS-6A,
And JS-9 and JS-9C Monthly Reports,
And Civil Cover Sheet, JS-44A, JS-44B, and JS-44C.**

I. General Instructions.

A. Civil Actions To Be Reported.

1. **Definition of a Civil Action.** For the purposes of these reporting instructions, a "civil action" is defined as any action docketed in the district court, with the exception of criminal cases, and certain types of ancillary or supplementary proceedings as provided in **Section I.A.4.** (page 3).
2. **Report Criteria.** The clerk of court should report all contested civil actions to the AO in accordance with the instructions contained herein, where (1) a filing fee has been paid, (2) an application to proceed in forma pauperis has been granted, or (3) no filing fee is required (e.g., bankruptcy appeals, motions to vacate sentence, etc.). No civil action should be reported by the clerk of court until one of these criteria is met, with the following exception:

A civil action involving an application to proceed in forma pauperis where refusal to grant the application is based on the fact that the complaint is frivolous, as provided in Title 28 U.S.C. Section 1915(d). (**Note:** If refusal to file is based strictly on the indigency of the plaintiff, the action should not be reported.)

This is the single exception to the requirement. In all other situations, a filing fee must be paid, an in forma pauperis application granted, or the action not require a fee.

- * j. miscellaneous docket cases only when a contested proceeding is conducted before a district judge. For these cases, transfer the case to the civil docket from the miscellaneous docket and submit a JS-5 report. (Note: This does not include proceedings conducted before magistrates.)

- * 4. **Ancillary and Supplementary Proceedings Not Defined As Civil Actions.** The following list includes those proceedings which are specifically not defined as civil actions (unless contested before a district judge):
 - a. applications for permission to file in forma pauperis (unless granted);
 - b. actions to perpetuate testimony as defined in Rule 27, **F.R.Cv.P.**;
 - c. actions to enforce administrative subpoenas and summons (e.g. petitions to enforce IRS summons pursuant to Title 26 U.S.C. Sections 7402(b) and 7604(a));
 - d. proceedings ancillary to an action pending in another district (i.e. applications for subpoenas for taking depositions as defined in Rule 45(d), **F.R.Cv.P.**);
 - e. supplementary proceedings brought in aid of execution;
 - f. petitions to remove criminal defendants from one district to another as defined in Rule 20, **F.R.Cv.P.**;
 - g. motions for return of property in a criminal case;
 - h. applications for writs of habeas corpus ad testificandum or ad prosequendum;
 - i. filing of a copy of a complaint and order of appointment by a receiver appointed in another district as defined in Title 28 U.S.C. Section 754;

Transmittal 64, Volume XI
Title II
March 1, 1985

- j. registration of a judgment obtained in another district as defined in Title 28 U.S.C. Section 1963;
- k. appointments of counsel under the Criminal Justice Act;
- l. grand jury proceedings;
- m. filings for record purposes only;
- n. criminal bail bond forfeitures;
- o. disbarment proceedings;
- p. property of dead seamen;
- q. motions for expungement;
- r. intra-district transfers; (**Note:** See special instructions on intra-district transfers in **Section III.D.** (page 37).)
- s. remands from an appellate court which only dismiss, reverse, or affirm the previous judgment and require no further court action;
- t. extradition cases;
- u. correspondence; and
- v. applications for fees and expenses submitted pursuant to Title 28 U.S.C. Sections 2412(b) and 2412(d)(1)(A) arising from civil actions already reported.

B. Reporting Forms. The following forms are used by the clerk of court to report activity of the district court related to civil actions:

1. **JS-5 Filing Report.** The JS-5 Filing Report (yellow) is one of the two report forms contained in the DC-111 District Court Docket package (hereinafter referred to as the docket set). It is used to report the initiation of a civil action.

2. **JS-5A Filing Report.** The JS-5A Filing Report (blue) is a report form, identical to the JS-5 Filing Report, which is available in pads. The JS-5A is used to report the initiation of a civil action in situations where the original JS-5 is missing, damaged, or otherwise not available. Its most common use is for reporting cases which have been reopened or remanded for further action by the district court.
3. **JS-6 Termination Report.** The JS-6 Termination Report (white) is the second report form contained in the docket set. It is used to report the disposition of a civil action previously reported on a JS-5 or JS-5A.
- * 4. **JS-6A Termination Report.** The JS-6A Termination Report (white) is a report form, identical to the JS-6 Termination Report, which is available in pads. The JS-6A is used to report the disposition of a civil action in situations where the original JS-6 is missing, damaged, or otherwise not available. This form should be partially completed if a JS-5A report form is used to initiate a case. The disposition data should then be completed and submitted when the case is terminated.
5. **JS-9 Monthly Report of Civil Cases.** The JS-9 Monthly Report of Civil Cases By the Clerk of Court (buff) is a summary report indicating the number of civil actions filed, terminated, and pending in the district during the report month. The JS-9 also provides information on the number of civil actions assigned to individual judges and/or magistrates in the district, as well as information on intra-district transfers and civil sanctions imposed.
- * 6. **JS-9C Monthly Report of Judge and Magistrate Reassignments.** The JS-9C Monthly Report of Judge and Magistrate Reassignments in Pending Civil Cases (pink) is used to revise judge codes and magistrate codes in civil cases that will be pending at the end of the current report month. This report is optional and does not have to be used on a consistent basis. Extensive judge and magistrate revisions are subject to prior notice by the clerk of court to SARD.

Transmittal 64, Volume XI
Title II
March 1, 1985

7. **JS-44 Civil Cover Sheet.** The JS-44 Civil Cover Sheet (white) is a special form provided for the court to obtain the basic report data on a civil action from the attorney (or other individual) filing the action. While this form is not submitted to the AO and is for court use only, it is included here because of its importance in collecting data for completion of the docket set. There are three variations of this form available for use by the court:
 - a. **JS-44A.** The JS-44A is similar to the JS-44C except that no means is provided for collecting data on related cases.
 - b. **JS-44B.** The JS-44B is a special variation for use by the territorial courts. It provides a means for collecting data on domestic relations and other local question matters. No provision is made on this form for data on related cases or diversity of citizenship actions.
 - c. **JS-44C.** The JS-44C is the most comprehensive variation of the Civil Cover Sheet. It provides a means for collecting all data except that related to local question matters (restricted to the JS-44B).

Samples of all report forms discussed in this Section are provided in Exhibits D through I of this Title.

C. Reporting Requirements.

- * 1. **Content of Monthly Report Package.** The monthly report package of civil actions should include all JS-5, JS-5A, JS-6, JS-6A, JS-9, and JS-9C (optional) forms related to activity in the court during the report month. For each office, the JS-5 and JS-5A forms should be grouped and arranged in docket number order. The JS-6 and JS-6A forms should be similarly grouped and arranged. The JS-9 should include the same number of filings as JS-5 and JS-5A forms and the same number of terminations as JS-6 and JS-6A forms; any deviations or special situations should be noted on the JS-9. The JS-9C should be included when judge and magistrate code changes to the current pending file are desired, and cases should be listed in docket order.

- * 2. **Transmission of Report Packages.** The monthly report package of civil actions should be forwarded to the AO no later than the fifth working day of the month following the month covered by the report. Please notify SARD in the event that the report cannot be mailed until after this time. The reports should be mailed to:

ADMINISTRATIVE OFFICE OF THE U.S. COURTS
ATTN: SARD CIVIL STATISTICS
WASHINGTON, DC 20544

Reports should be mailed in the blue zippered mailbags. No other method should be used for mailing monthly reports. These bags are equipped with a reversible address card, franked on both sides, with the court address on one side and the AO address on the other side. SARD personnel will ensure that all mailbags are returned immediately to the court.

II. Specific Instructions.

A. Instructions for Completing DC-111 District Court Docket and Related Forms.

1. **DC-111.** The DC-111 District Court Docket is the permanent record of the court's activity in a civil action. All docket entries are made on the DC-111. While the DC-111 itself is not submitted to the AO, two of the basic reports, JS-5 and JS-6, are contained in the docket set. These reports are interleaved with carbons, so that the basic data on the civil action is duplicated on the report forms. These forms are then detached from the set and sent to the AO. The various data items of the DC-111 will be discussed only as they relate to the JS-5 and JS-6. This data is available from the JS-44 Civil Cover Sheet completed by the attorney filing the case. It is the responsibility of the clerk of court, however, to verify the data and ensure that the proper information is included on the JS-5. All other matters relating to the format and content of data on the DC-111 should be dealt with in accordance with Rule 79 of the **F.R.Cv.P.** and the Clerks Manual. Additional information may be found in the **Guidelines for Docketing Clerks** manual available from the Federal Judicial Center.

- * 2. **JS-5 (and JS-5A).** The data elements contained on the JS-5 are identical to those on the JS-5A. Therefore, the instructions contained in this section for completion of the JS-5 also pertain to the JS-5A. All of the following data elements must be complete and accurate to ensure that each case is filed at the AO. Incomplete reports will be returned to the clerk of court. Specific instructions for completing each item follows.

DIST

- a. **District.** Enter the four digit statistical code for the district in which the civil action is filed. These codes are contained in Appendix A of Volume XI of the **Guide to Judiciary Policies and Procedures** (hereinafter referred to as the Statistical Analysis Manual or S.A.M.).

OFF.

- b. **Office.** Enter the one digit statistical code (either alphabetic or numeric) of the office within the district where the civil action was filed. These codes are also contained in Appendix A of S.A.M.

DOCKET	
YR.	NUMBER

- * c. **Docket Number.** Enter the seven digit docket number assigned to the civil action by the clerk of court from the regular docket series. The docket number should be in YY NNNNN format. (YY is the last two digits of the calendar year in which the case was filed and NNNNN is the five digit sequence number from 00001 to 99999.) In all situations except those cited in **Section II.A.2.d.** (page 10), the docket year must equal the year reflected in the filing date.

FILING DATE		
MO.	DAY	YEAR

- d. **Filing Date.** Enter the six digit number corresponding to the date in which the action was filed in the court. The filing data should be in MM DD YY format. (MM is the month, DD the day, and YY is the year in which the action was initiated.) This date represents the date of original filing with the following exceptions:
- (1) **Transferred Cases.** For actions received from another district, enter the date the papers were received from the transferring district.
 - (2) **Reopened Cases.** For actions reopened or reinstated by the court, enter the date of the order vacating the court's order which previously terminated the case. (**Note:** See special instructions on reopened and remanded cases contained in **Section III.E.** (page 37).)
 - (3) **Removals.** For actions removed from state court or other jurisdictions, enter the date the petition for removal was filed in the district court.
 - (4) **Remanded Cases.** For actions remanded from the Supreme Court or Court of Appeals for further action, enter the date the order of the higher court that vacated the earlier district order on the action was received by the district court. (**Note:** See special instructions on reopened and remanded cases contained in **Section III.E.** (page 37).)



e. **Jurisdiction.** Enter the one digit statistical code identifying the basis of jurisdiction for filing in the district court. The statistical codes for jurisdiction are as follows:

- (1) **United States Government Plaintiff.** Actions by agencies and officers of the U.S. (Title 28 U.S.C. Sections 1345 and 1348).
- (2) **United States Government Defendant.** Actions against agencies and officers of the U.S. (Title 28 U.S.C. Section 1346).
- (3) **Federal Question.** Actions arising under the Constitution, Acts of Congress or Treaties of the U.S. (Title 28 U.S.C. Section 1331).
- (4) **Diversity of Citizenship.** Actions, where the amount in controversy exceeds \$10,000, between:
 - * (a) citizens or corporations of different states;
 - * (b) citizens or corporations of a state and citizens or subjects of a foreign country;
 - * (c) citizens or corporations of different states where citizens or subjects of a foreign country are additional parties; or
 - (d) a foreign state, defined in Title 28 U.S.C. Section 1603(a), as plaintiff and citizens of a state or different states.

- (5) **Local Question.** Actions involving non-Federal civil procedures based on local civil law (**Note:** This code is for use in territorial districts only.)

For those civil actions where more than one of the jurisdictional codes specified above can be applied, the preference should be in the order listed (e.g. United States Plaintiff as highest priority and Local Question as lowest).

N/S

- f. **Nature of Suit.** Enter the three digit statistical code representing the nature of the action filed. This data is available from the JS-44 Civil Cover Sheet completed by the attorney filing the case, but should be verified by the clerk of court for accuracy. The nature of suit code reported should be consistent with the statutory citations contained in the "Cause of Action" section of the JS-5 (see below). If more than one nature of suit is applicable, enter the code of the first listed complaint or most serious complaint, as determined by the clerk of court. The statistical nature of suit codes are provided in Exhibit J of these instructions. A summary of commonly cited statutes and the appropriate nature of suit codes is provided in Volume I and II of the **U.S. Code, Title and Section, Civil Citations Manual**. Also see Exhibit B.

o

g. **Origin.** Enter the one digit statistical code representing the source of the action filed. This data is available from the JS-44 Civil Cover Sheet completed by the attorney filing the case, but should be verified by the clerk for accuracy. This data element is critical in identifying cases which the district must handle more than once and accuracy is essential. The statistical codes for origin are as follows:

- (1) **Original Proceeding.** Actions originally received by the court or which cannot be classified by any of the other categories in this section.
- * (2) **Removed.** Actions initiated in the state courts removed to the district court pursuant to Title 28 U.S.C. Sections 1441 through 1447.
- (3) **Remanded.** Actions remanded for further action by the district. (**Note:** See special instructions on reopened or remanded actions contained in **Section III.E.** (page 37).)
- (4) **Reinstated or Reopened.** Actions previously filed and disposed of by the district, which were reopened for additional action. (**Note:** See special instructions for reopened or remanded actions contained in **Section III.E.** (page 37).)
- (5) **Transferred.** Actions received which were transferred pursuant to Title 28 U.S.C. Section 1404(a). This category should not be used for intra-district transfers or multidistrict transfers. (**Note:** See special instructions related to intra-district transfers in **Sections II.A.2.p.** (page 18) and **III.D.** (page 37).)

- (6) **Multidistrict Litigation.** Actions transferred into the district by an order entered by the Judicial Panel on Multidistrict Litigation pursuant to Title 28 U.S.C. Section 1407. (Note: See special instructions related to multidistrict litigation actions contained in Sections II.A.2.p. (page 18) and III.F. (page 38).)
- (7) **Appeal to District Judge of Magistrate Judgment.** Actions filed with the court to appeal the decision of a magistrate to a district judge in an action previously disposed of by the magistrate. (Note: See special instructions related to appeals of magistrate judgments in Section III.G. (page 39). Also see Exhibit D-9.)

D	
PTF	DEF

- * h. **Diversity.** In cases involving diversity of citizenship, data is required on the citizenship of the principal parties. This information is available from the JS-44 Civil Cover Sheet completed by the attorney filing the case, but should be verified by the clerk of court for accuracy. Enter for both the principal plaintiff ("PTF") and the principal defendant ("DEF") in the action (usually the first listed) one of the following one digit statistical codes to indicate citizenship:
- (1) citizen of this state;
 - (2) citizen of another state;
 - (3) citizen or subject of a foreign country;
 - (4) incorporated, or principle place of business in this state;

- (5) incorporated and principle place of business in another state; or
- (6) foreign nation.

For those diversity actions where more than one of the citizenship codes specified above can be applied, preference should be given to non-resident businesses and non-citizens of the state.

R 23

- * i. **Rule 23 (Class Action).** If the action involves an allegation by the plaintiff that the complaint meets the prerequisites of a "Class Action" as provided in Rule 23, **F.R.Cv.P.**, enter "1" in this item. If class action is granted after the JS-5 has been submitted, and you wish to reflect this change on the SARD pending file, indicate the change in a memo accompanying the monthly report. Do not submit a supplementary JS-5 (JS-5A) to indicate a change in class action status.

\$ DEMAND
Nearest \$1,000

- j. **Demand.** Enter the monetary amount (in thousands of dollars) sought by the plaintiff(s) in the action. Dollar figures must be rounded to the nearest thousand (e.g. \$1,234.56 should be entered as "1" and \$7,857.11 should be entered as "8"). For monetary amounts less than \$500, enter "1." For monetary amounts of \$10,000,000 or more, enter "9999." Do not enter more than four digits. If no monetary amount is demanded, leave this item blank.

JUDGE/ MAG. NO.
J

- k. **Judge Number.** Enter the four digit statistical code for the judge to whom the action was originally assigned. If the action was assigned directly to a magistrate, leave this item blank. Statistical codes for judges are contained in Appendix B of S.A.M. For three judge courts, as defined in Title 28 U.S.C. Section 2284, enter "3-J" in this item and list the judges on the reverse of the JS-5.

M

- l. **Magistrate Number.** Enter the four digit statistical code for the magistrate to whom all or part of the action was originally referred. If the action was handled solely by a judge, leave this item blank. Statistical codes for magistrates are contained in Appendix C of S.A.M.

COUNTY

- m. **County.** Enter the five digit statistical code for the county of residence of the first listed plaintiff in all actions except U.S. government plaintiff actions. In U.S. government plaintiff actions, enter the statistical code for the county of residence of the first listed defendant. In land condemnation cases, use the location of the tract of land involved. County of residence information is available from the JS-44 Civil Cover Sheet completed by the attorney filing the case, but the

clerk of court should verify the data for accuracy. Statistical codes for counties are found in Appendix D of S.A.M. (**Note:** Special statistical codes are provided for locations "Within U.S. but outside home state" (88888) and "Outside U.S." (99999). This allows the clerk to deal with codes for only the state in which his district is located. A code, however, must be entered for every action reported.)

PLAINTIFFS

- n. **Plaintiffs.** Enter the name of the first listed plaintiff identified in the action with the last name first. If more than one plaintiff is involved, indicate by adding the term "et al" after the name of the first listed plaintiff. If the plaintiff is the U.S. and the officer or agency is unknown, enter "United States of America" or "USA." If the agency is known, use the standardized Administrative Agency abbreviations contained in Exhibit A of this Title.

DEFENDANTS

- o. **Defendants.** See instructions for "Plaintiffs" above, substituting "Defendant" for "Plaintiff."

CAUSE

(CITE THE U.S. CIVIL STATUTE UNDER WHICH THE CASE
IS FILED AND WRITE A BRIEF STATEMENT OF CAUSE)

- * **p. Cause.** Enter the U.S. civil statute(s) under which the action is filed and write a brief statement of the cause of action. This information must be entered for each case, and is available from the JS-44 Civil Cover Sheet completed by the attorney filing the case. The clerk of court should verify the data for accuracy. For actions transferred into the district pursuant to Title 28 U.S.C. Sections 1404(a) or 1407, also specify in this section, the district from which the action was transferred. (**Note:** Do not include jurisdiction or venue citations in this item, unless the case is a diversity action and no other Federal statutes apply. Otherwise, include only citations reflecting the nature of the action. A summary of commonly cited statutes is provided in Volumes I and II of the **U.S. Code, Title and Section, Civil Citations Manual.**)

3. **JS-6 (and JS-6A).** The data elements contained on the JS-6 are identical to those on the JS-6A. Therefore, the instructions contained in this Section for completion of the JS-6 also pertain to the JS-6A. Because the docket set is interleaved with carbons, the following data elements which appear on the JS-5 also appear on the JS-6 when the DC-111 is completed: district, office, docket number, jurisdiction, nature of suit, origin, diversity, demand, and county. Make sure each of these items is readable on the JS-6. If corrections are necessary, make them and encircle the item.

Special Note: A special procedure, approved by the Subcommittee on Judicial Statistics of the Judicial Conference was developed to statistically terminate certain cases pending three years or more. The requirements for implementing this procedure are defined in **Section III.H.** (page 40).

Specific instructions for completing the remaining items on the JS-6 follows.

TERMINATION		
MO.	DAY	YR.
▼		

- a. **Termination Date.** A civil action is considered terminated when a final judgment is entered or the action is dismissed, discontinued, settled, withdrawn, remanded, or transferred. Enter the date the final judgment or order disposing of the action was entered. The termination date should be in MM DD YY format (MM is the month, DD the day, and YY the year).

R
23

- b. **Rule 23 (Class Action).** For actions involving allegations of class action, a "1" was inserted in this item when the case was filed. The entry in this item must be changed when the case is terminated, to one of the following to indicate the decision on the allegation: "2" for denied or "3" granted. Statistical code "1" cannot be reported in this item on the JS-6. If the case is terminated before a decision is rendered on the class action allegation, the entry in this item should be changed to "2"; the lack of action by the court should be considered, for statistical purposes, the same as a denial.

JUDGE/ MAG. NO.
J

- c. **Judge Number.** If the action was initially assigned to a judge, a four digit statistical code was entered in this item when the case was filed. If one or more additional judges participated in the disposition of the case, change this code to reflect the code for the judge who handled the most substantial amount of the proceedings. If no change is made, it is assumed that the judge originally assigned to the action disposed of it. If no judge number was entered at the time the action was filed, but a judge was involved, enter the proper statistical code in this item on the JS-6. Statistical codes for judges are contained in Appendix B of S.A.M.

M

- d. **Magistrate Number.** Statistical codes are contained in Appendix C. See instructions for Judge Number in **Section II.A.3.c.** on this page.
- e. **Procedural Progress at Termination.** Mark the one category that best indicates the point to which the action had progressed when it was disposed of. See Exhibit E-11 for more information on determining procedural progress at termination.
- * **Special Note:** For the purposes of this report, date issue was joined is defined as the date on which the last answer or reply of the defendant was filed before the first proceeding in the case began. In multi-defendant cases where the case proceeds before all answers are received, use the date of the last answer prior to initiation of action in the case.

I Procedural Progress at Termination

- 1 before issue joined
 - 2 after motion decided but before issue joined
 - 3 Issue joined, no other court action
 - 4 Issue joined, and after judgment of court on motion
 - 5 Issue joined, and after pretrial conference but before trial
 - 6 during court trial
 - 7 during jury trial
 - 8 after court trial
 - 9 after jury trial
 - 0 Other (specify on reverse)
- } Case terminated

- (1) **Before Issue Joined.** The civil action was disposed of with no action by a judge or magistrate before an answer was filed. (Note: Include in this category all prisoner petitions and other actions which are withdrawn or otherwise disposed of without activity by a judge or magistrate, before issue is joined.)
- (2) **After Motion Decided, Before Issue Joined.** The civil action was disposed of after some activity by a judge or magistrate, but before an answer was filed. (Note: Include in this category prisoner petitions disposed of where issue was not joined and no pretrial or trial occurred.)

Transmittal 64, Volume XI
Title II
March 1, 1985

- (3) **Issue Joined, No Other Court Action.** The action was disposed of with no action by either a judge or magistrate after an answer was filed. Indicate at the bottom of the JS-6 the date issue was joined. (Note: Include in this category all prisoner petitions and other actions which are withdrawn or otherwise disposed of without activity by a judge or magistrate, after issue is joined.)
- (4) **Issue Joined, After Judgment of Court on Motion.** An answer was filed and the action was disposed of after some judicial action by a judge or magistrate, but before any pretrial conference. Indicate the date issue was joined at the bottom of the JS-6.
- (5) **Issue Joined, After Pretrial Conference, but Before Trial.** The action was disposed of before a trial began but after an answer was filed and a pretrial conference, as defined in Rule 16, F.R.Cv.P., was held before a judge or magistrate. Indicate the date issue was joined and pretrial conference began at the bottom of the JS-6.

Special Note: For the purposes of this report, a trial is defined as "a contested proceeding in which evidence is introduced." A trial is considered completed when a verdict is returned by a jury or a decision is rendered by the court.

- (6) **Case Terminated During Court Trial.** The action was disposed of after a court trial (before a judge or magistrate but not a jury) began, but before the trial was concluded. Indicate the date trial began at the bottom of the JS-6.
- (7) **Case Terminated During Jury Trial.** The action was disposed of after a jury trial began, but before the trial concluded. Indicate the date trial began at the bottom of the JS-6.

- (8) **Case Terminated After Court Trial.** The action was disposed of after the completion of a trial before a judge or magistrate. Indicate the dates trial began and ended at the bottom of the JS-6.
- (9) **Case Terminated After Jury Trial.** The action was disposed of after the completion of a trial before a jury. Indicate the dates the trial began and ended at the bottom of the JS-6.
- (0) **Other.** Situations where categories 1 through 9 do not properly reflect the procedural progress. (**Note:** The particular situation should be specified on the reverse of the JS-6.)

SHOW DATES If applicable	Date Issue Joined	Date Pretrial Conference	Date Trial Began	Date Trial Ended
-----------------------------	-------------------	--------------------------	------------------	------------------

- f. **Show Dates.** Where applicable, indicate the date issue was joined, date of pretrial conference, date trial began and date trial ended. Where more than one pretrial conference is held, indicate the date of the first conference. If more than one trial is held, indicate the date for the first trial.

Transmittal 64, Volume XI
Title II
March 1, 1985

II Disposition

- 0 Transfer to other District
1 Remanded to state court
2 Dismissed for want of prosecution
3 Dismissed, discontinued, settled, withdrawn, etc.

Judgment on

- 4 Default
5 Consent
6 motion before trial
7 jury verdict
8 directed verdict (jury trial)
9 court trial
X Other
- } during or after trial

g. **Disposition.** Mark the category that best describes the method of disposition of the civil action. Mark only one of the following categories:

- (0) **Transferred.** The action was transferred to another district or other Federal court for action. This includes both transfers under Title 28 U.S.C. Sections 1404(a) and 1407 (multi-district litigation transfers).
- (1) **Remanded.** The action was remanded to a state court or other jurisdiction from which it arose. Include in this category remands of actions to administrative agencies.
- (2) **Dismissed for Want of Prosecution.** The action was disposed of by the clerk pursuant to local rule after a specified inactive period.
- (3) **Dismissed, Discontinued, Settled, Withdrawn, Etc.** The action was disposed of by settlement between the parties out of court, by the plaintiff filing notice of dismissal under Rule 41(a), **F.R.Cv.P.**, or any other method of disposition not involving a judgment, which is not covered by the preceding categories.

- (4) **Judgment on Default.** The action was disposed of by a default judgment entered by the court or the clerk of court pursuant to Rule 55, **F.R.Cv.P.**
- (5) **Judgment on Consent.** The action was disposed of by an order of judgment agreed to by all parties and signed by the judge or magistrate, which grants some form of affirmative relief to one of the parties. This category should be indicated even though the agreement was entered into after a trial began.
- (6) **Motion Before Trial.** The action was disposed of by a final judgment based on one of the following:
- (a) an agreed statement of facts;
 - (b) a motion under Rule 12(b), **F.R.Cv.P.**, including:
 - 1. lack of jurisdiction over the subject matter;
 - 2. lack of jurisdiction over the person;
 - 3. improper venue;
 - 4. insufficiency of process;
 - 5. insufficiency of service of process;
 - 6. failure to state a claim; or
 - 7. failure to join an indispensable party.
 - (c) a motion for judgment on the pleadings, as defined in Rule 12(c), **F.R.Cv.P.**;
 - (d) a motion for summary judgment, as defined in Rule 56, **F.R.Cv.P.**;

- (e) any other contested motion which results in disposition before trial; or
- (f) an order dismissing a prisoner petition.
- (7) **Judgment on Jury Verdict During or After Trial.** The action was disposed of by entry of a final judgment resulting from a verdict by a jury (other than a directed verdict).
- (8) **Judgment on Directed Verdict During or After Trial.** The action was disposed of by entry of a final judgment resulting from a verdict directed to a jury by the court.
- (9) **Judgment During or After Court Trial.** The action was disposed of by entry of a final judgment resulting from a decision by a judge or magistrate during or after a trial (other than a jury trial).
- (X) **Other.** The action was disposed of by entry of a final judgment by a method not sufficiently covered by any of the categories 4 through 9. (Note: The particular situation should be specified on the reverse of the JS-6.)

III Nature of Judgment

- 0 No monetary award
 - 1 \$_____ only
Nearest \$1,000
 - 2 \$_____ and
other (indicate on reverse)
 - 3 Injunction
 - 4 Other, foreclosure, con-
demnation, remand, etc.
 - 5 Costs only
- h. **Nature of Judgment.** For those actions disposed of by entry of a final judgment, mark one of the following categories that best describes the nature of judgment:
- (0) **No Monetary Award.** Judgment makes no monetary award.

- (1) **Monetary Award Only.** Judgment makes only a monetary award. Other relief sought (if any) is denied. Specify the monetary award in thousands of dollars, rounded to the nearest thousand (i.e. \$1,234.56 should be reported as "1"; \$2,575.00 as "3"; \$500,000 as "500"; \$2,500,400 as "2500").
- (2) **Monetary Award and Other.** Judgment makes both monetary and non-monetary award. Specify the monetary award in thousands of dollars, rounded to the nearest thousand. Specify the non-monetary award on the reverse of the JS-6.
- (3) **Injunction.** Judgment awards injunctive relief, but no monetary relief.
- (4) **Other, Foreclosure, Condemnation, Remand, Etc.** Judgment makes special award which cannot be properly described by one of the other categories.
- (5) **Costs Only.** Judgment awards only court costs; all other awards sought are denied.

IV Judgment For:

- 1 Plaintiff
- 2 Defendant
- 3 Both
- 4 Unknown

i. **Judgment For.** For those actions disposed of by entry of a final judgment, mark one of the following categories that best describes which party the judgment favors:

- (1) plaintiff
- (2) defendant
- (3) both
- (4) unknown

V Involvement of U.S. Magistrate

- 1 Consent of parties to magistrate judgment (CCA appeals)
- 2 Consent of parties to magistrate judgment (USDC appeals)
- 3 Special master reference
- 4 All pretrial matters, including dispositive motions
- 5 Report and recommendation on dispositive motions
- 6 All pretrial matters, except dispositive motions
- 7 Full pretrial/settlement conferences
- 8 Non-dispositive motions
- 0 No involvement of magistrate

* **j. Involvement of U.S. Magistrate.** Reporting of this item is suspended until further notice.

* **k. Involvement Other Than Judge or Magistrate.** Reporting of this item is suspended until further notice.

* **B. Instructions for Completing the JS-9 Summary Report Form.**

1. **JS-9.** The JS-9 Monthly Report of Civil Cases By the Clerk of Court is a summary report which indicates the number of civil actions filed, terminated, and pending during the report month. (Filing and termination totals should correspond to the number of JS-5 and JS-6 reports submitted.) In addition, the JS-9 provides data on the assignment of actions to individual judges/magistrates, on intra-district transfers, and on civil sanctions imposed during the month. An example of a completed JS-9 is provided in Exhibit H of this Title. Specific instructions for completing each item are as follows:

a. Part I. Part I provides data on the movement of civil cases for the month being reported and includes the following categories:

1. Cases pending at the close of preceding month.	
---	--

(1) **Cases pending at the close of preceding month.** Enter the number of cases pending at the close of the preceding month as reported on the JS-9 (see **Section II.B.1.a.(4)** (below)) for that month. If this number differs from that reported on the previous JS-9, please indicate the reason for the discrepancy.

2. Total cases filed during this month.	
---	--

(2) **Total cases filed during this month.** Enter the number of cases filed or reopened which are being submitted during the current report month. If this total differs from the number of JS-5 and JS-5A forms submitted, indicate on the JS-9 the reason for the discrepancy.

3. Total cases terminated this month.	
---------------------------------------	--

(3) **Total cases terminated this month.** Enter the number of cases disposed of which are being submitted during the current report month. If this total differs from the number of JS-6 and JS-6A forms submitted, indicate on the JS-9 the reason for the discrepancy.

4. Cases pending at close of this month.	
--	--

(4) **Cases pending at close of this month.** Enter the number of civil actions pending as of the last day of the report month, calculated as follows: Item (1) plus item (2) minus item (3). If this total differs from the number of civil actions actually pending in the court, contact SARD for instructions on resolving the discrepancy.

b. **Part II.** Part II provides data on the assignment of civil actions to judges/magistrates, as follows:

PART II: NUMBER OF CIVIL CASES ASSIGNED TO INDIVIDUAL JUDGES/MAGISTRATES DURING MONTH AND THE TOTAL NUMBERS PENDING AT END OF MONTH

JUDGE/MAGISTRATE	NUMBER OF CASES		JUDGE/MAGISTRATE	NUMBER OF CASES		
	ASSIGNED DURING MONTH	PENDING AT END OF MONTH		ASSIGNED DURING MONTH	PENDING AT END OF MONTH	
(A)	(B)	(C)	(A)	(B)	(C)	
NOTE: Column "C" of the current report should be equal to the total of Column "C" from the previous report plus the number of new assignments (Column B of current report) less the number terminated or transferred to other judges during the current month.			Total civil cases for which final proceedings are still pending as of the end of month.			ASSIGNED
						UNASSIGNED
						TOTAL PENDING

Number of Civil Cases Assigned to Individual Judges/Magistrates During the Month and the Total Numbers Pending at the End of the Month. Enter the names of the judges and magistrates in the district and indicate in the appropriate spaces the number of cases assigned to each during the month and pending at the end of the month. (**Note:** Do not enter statistical numbers for judges or magistrates.) Also enter, in the appropriate spaces, the total number of cases pending in the district at the end of the month which have been assigned to individual judges or magistrates, the total number of unassigned cases pending in the district, and the total number of cases pending. This grand total should be the same as that indicated in Part I of the JS-9 (see **Section II.B.1.a.(4)** (page 29)). If this total differs from that in Part I, indicate the reason for the discrepancy on the JS-9.

PART III

MONTHLY REPORT OF WITHIN-DISTRICT TRANSFERS
 (DO NOT submit amended JS 5's for within-district transfers.)

CASES ORIGINALLY FILED IN:			TRANSFERS TO:			
OFFICE CODE	DOCKET NO.	ORIGIN CODE	OFFICE CODE	DOCKET NO.	ORIGIN CODE	DATE

c. **Part III.** Part III provides data on intra-district transfers and omitted docket numbers, as follows:

If the sequence of docket numbers of cases filed is broken for any reason except because of a within-district transfer (listed above) please list the docket number omitted and the reason therefore in the space below.

- (1) **Monthly Report of Within-District Transfers.**
 For all cases transferred from one office to another within the district, enter the following data for the case in both the transferring and receiving offices: Office (see **Section II.A.2.b.** (page 9)); Docket Number (see **Section II.A.2.c.** (page 9)); and Origin (see **Section II.A.2.g.** (page 13)). Do not submit an additional JS-5 for a within district transfer. All changes reflecting within district transfers will be made based on the data provided in this section only.

Transmittal 64, Volume XI
Title II
March 1, 1985

- (2) **Omitted Docket Numbers.** Enter in the space provided, the office and docket numbers assigned to any cases in the regular sequence for which a JS-5 was not submitted. This notifies SARD that these cases were omitted.

PART IV

**Report on Civil Cases in Which a Judicial Officer
Imposed Sanctions As Defined in
Rules 11, 16 and 37, Federal Rules of Civil Procedure**

None this month Yes (attach a copy of the appropriate court order(s).)

- * d. **Part IV.** Part IV indicates whether a judicial officer imposed sanctions during the report month pursuant to Rules 11, 16, 37, **F.R.Cv.P.** If no such orders were entered during the month, mark the item entitled "None this month." If such orders were entered, mark the item entitled "Yes" and attach a copy of the appropriate court order(s).

PERSON SUBMITTING REPORT
TELEPHONE NUMBER (FTS)

- e. **Person Submitting Report.** At the bottom of page 2, type or print the name and FTS telephone number of the individual to be contacted if there are questions regarding the report. This individual should be familiar with both the report forms and the instructions presented here.
- * 2. **JS-9C.** The JS-9C Monthly Report of Judge and Magistrate Reassignments in Pending Civil Cases is an optional form. It is to be used to reflect judge or magistrate reassignments in civil cases that will be pending at the end of the report month.

Transmittal 64, Volume XI
Title II
March 1, 1985

DISTRICT CODE	OFFICE CODE	DOCKET NUMBER	ORIGIN CODE	OLD JUDGE CODE	NEW JUDGE CODE	OLD MAGIS- TRATE CODE	NEW MAGIS- TRATE CODE	AO USE ONLY

a. **Identification Data.** Enter data on district, office, docket number, and origin exactly as shown on SARD's current pending file. Cases should be listed in docket number order. Indicate in the appropriate space the code of the judge or magistrate to whom the case was reassigned. The shaded area of the JS-9C is provided for entry of the former judge or magistrate code if desired; this is not required for processing reassignments, but it may be of value to the court as a written record of the prior assignment.

b. **Completed Reports:** Attach the completed report to the JS-9 Monthly Report of Civil Cases.

Note: This report is exclusively for judge and magistrate code reassignments in civil cases that will be pending at the end of the report month. Judge or magistrate code revisions to any cases terminated during the report month or prior months should be requested by separate memorandum.

Transmittal 64, Volume XI
Title II
March 1, 1985

- C. **Instructions for Completing JS-44A, JS-44B, and JS-44C Civil Cover Sheets.** The JS-44 Civil Cover Sheet is a special form provided for the use of the court to obtain basic data on a civil action from the attorney or other individual filing the action. While the Civil Cover Sheet is not submitted to the AO, it is invaluable in completing the report forms that are submitted. In utilizing the data from the Civil Cover Sheet, the clerk of court should review the data and revise the information if necessary. The instructions for completing the JS-44 (including three variations) are provided in Exhibit C of this Title.

III. Special Instructions.

- A. Land Condemnation Cases.** In March 1975, the Judicial Conference approved for transmittal to all Federal district courts, for use on an optional basis, standard guidelines in land condemnation cases. Among the guidelines transmitted was the following regarding the reporting of such actions:

"For each tract, economic unit or ownership for which the just compensation is required to be separately determined in a total lump sum, there shall be a separate civil action file opened by the clerk, which shall be given a serial number, as given all other civil actions. For each such civil action, a separate JS-5 card shall be prepared on filing and a separate JS-6 card prepared on closing of each such separate civil action."

This procedure allows for the reporting of each individual tract, for statistical purposes, as a separate action. The normal procedures for completing these reports, as identified in this Title, should be followed.

*** B. Bankruptcy Appeals and Withdrawals**

- 1. Appeals.** Appeals to the district court of final judgments and orders of bankruptcy judges pursuant to Title 28 U.S.C. Section 158 should be reported under nature of suit code 422 and assigned docket numbers by the clerk of court from the regular civil docket series.
- 2. Withdrawals.** Bankruptcy matters withdrawn to the district court pursuant to 28 U.S.C. 157 and any other bankruptcy matter received by the district court that is not an appeal are categorized as withdrawals. The clerk of court should report such withdrawals as civil actions (using nature of suit 423) only when the bankruptcy matter withdrawn involves a proceeding that is contested before a district judge. For

Transmittal 64, Volume XI
Title II
March 1, 1985

statistical purposes, uncontested bankruptcy withdrawals are considered miscellaneous matters and are not to be reported on a JS-5.

Examples of reports of bankruptcy appeals and bankruptcy withdrawals are provided in Exhibits D-7, D-8, E-8, and E-9.

C. Motions To Vacate Sentence. Motions to vacate sentence, as defined in Title 28 U.S.C. Section 2255 (Rules 2 and 3), must be recorded on the original criminal docket together with the outcome of the motion. In order to provide continuity with previous recording of Section 2255 motions to vacate sentence and to study the impact of such motions on civil filings and dispositions, the following additional reporting procedure should be followed for recording these motions:

- 1. Filing a Motion.** When a motion to vacate sentence is filed pursuant to Title 28 U.S.C. Section 2255, the action should be noted by completing a JS-5 or JS-5A filing report and submitting it to SARD with the other civil filing reports for the month. (See instructions for completing the JS-5 and JS-5A in **Section II.A.2.** (page 8).) The nature of suit item on the JS-5 or JS-5A should be completed by inserting statistical code "510." Indicate in the space provided for "Plaintiff" the criminal docket number of the case from which the motion arose. An example of a completed JS-5 for a motion to vacate sentence is provided in Exhibit D-6 of this Title.
- 2. Disposing of a Motion.** When a motion to vacate sentence is decided upon by the court, the action should be noted by completing a JS-6 or JS-6A termination report and submitting it to SARD with the other civil termination reports for the month. (See instructions for completing the JS-6 and JS-6A in **Section II.A.3.** (page 18).) An example of a completed JS-6 for a motion to vacate sentence is provided in Exhibit E-3 of this Title.

D. Intra-district Transfers. Transfers of civil actions from one office or division of a district to another are reported in Part III of the JS-9 summary monthly report. (See instructions for completing Part III of the JS-9 in **Section II.B.1.c.(1)** (page 31).) The original office or division, the original docket number and the origin code should be indicated on the reverse along with the date the case was received in the office or division disposing of the action. No JS-5 or JS-6 should be submitted at the time of the transfer. When the action is disposed of, submit a JS-6 or JS-6A report using the docket number in the office or division disposing of the action. An example of a completed JS-6 for an intra-district transfer is provided in Exhibit E-10 of this Title.

E. Reopened or Remanded Actions. Actions previously filed and disposed of by the court, which are reopened for significant additional action, or remanded from an appellate court for further action by the district court generally create as much work for the court as new actions. Because of this, these reopened or remanded actions are counted, for statistical purposes, as separate actions. Actions reopened for the purpose of recording changes to the record or entry of correspondence are not considered to be separate actions. When actions are reopened or remanded for significant additional action, the normal procedures for reporting, as outlined in **Section II.A.** (page 8), should be adhered to with the following exceptions:

1. JS-5 or JS-5A Filing Report.

- a. Docket Number.** Enter the same docket number assigned by the clerk of court when the action was originally filed. Do not assign a new docket number.
- b. Filing Date.** For reopened actions, enter the date of the order vacating the court's order which previously terminated the action. For remanded actions, enter the date the appellate court order that vacated the earlier district court order in the action was received by the district court. Do not use the date the case was originally filed in the district court.

- c. **Origin.** For reopened actions, enter statistical code "4." For remanded actions, enter statistical code "3." This item is critical for distinguishing this situation from the original action in the district.

2. JS-6 or JS-6A Termination Report.

- a. **Termination Date.** Enter the date the action was disposed of subsequent to reopening. Do not enter the date the case was originally disposed of by the court.
- b. **Procedural Progress at Termination.** Mark the appropriate category that best indicates the point to which the action had progressed when it was disposed of the second time. In making the determination on the best category in this item, the only activity prior to the date reflected as "Filing Date" which should be considered is whether issue was joined. If issue was joined for the original proceeding, it should be considered as joined for the reopened action. In the case of pretrial conferences, motions, or trials, however, only such activity that occurs after the "Filing Date" should be considered. For example, categories 6, 7, 8, and 9 should only be considered if a trial was held after reopening, regardless of whether a trial was held during the original disposition of the action.

- F. **Multidistrict Litigation.** Title 28 U.S.C. Section 1407 provides that civil actions involving one or more common questions of fact and pending in different districts may be transferred by the Judicial Panel on Multidistrict Litigation for coordinated or consolidated pretrial proceedings. Transfers under the statute become effective with the filing of the Panel's transfer order in the office of the clerk of court for the transferee district (Title 28 U.S.C. Section 1407(c)). At that time, transfer of jurisdiction of the action to the transferee district is automatic and complete, and jurisdiction of the original court ceases. The special procedures for reporting the transfer of multidistrict litigation for both the original and transferee courts are as follows:

Original Court

Transferee Court

After Order of Transfer

Submit a JS-6 for each action transferred out of the district. Enter the date of transfer as "Termination Date."

Submit a JS-5 for each action transferred into the district. Enter the date of receipt of the Panel's transfer order as "Filing Date." Enter statistical code "6" as "Origin."

After Remand Order

Submit a JS-5 for each action transferred back into the district. Enter the date papers are received from transfer court as "Filing Date." Enter statistical code "4" as "Origin" (do not use statistical code "6.")

Submit a JS-6 for each case remanded back to the original district. Enter the date of receipt of the remand order as "Termination Date."

For all other report items not specified above, follow the standard instructions for completing the JS-5 and JS-6 reports as provided in **Sections II.A.2.** (page 8) and **II.A.3.** (page 18).

- G. Magistrate Appeals.** Title 28 U.S.C. Section 636(c) provides that, upon prior consent of the parties, the judgment of a magistrate in a civil action in the district court may be appealed to a judge of the district court in the same manner as an appeal from a judgment of a district court to a court of appeals. These magistrate appeals often create as much work for the court as new actions. Because of this, such appeals are counted, for statistical purposes, as separate actions. Appeals of both decisions on the merits and appeals of determinations for fees and expenses as outlined in Title 28 U.S.C. Sections 2412(b) and 2412(d)(1)(A) should be reported. When one of the parties enters a petition exercising the right to appeal the magistrate's decision to a district judge, the normal procedures for reporting the filing and disposition of an action, as

Transmittal 64, Volume XI
Title II
March 1, 1985

identified in **Sections II.A.2.** (page 8) and **II.A.3.** (page 18), should be implemented. All items should be completed in accordance with the instructions, with the following exceptions:

1. **Docket Number.** Enter the same docket number assigned by the clerk of court when the action was originally filed. Do not assign a new docket number.
2. **Filing Date.** Enter the date on which the petition of the party initiating the appeal was entered.
3. **Origin.** Enter the statistical code "7." This item is essential for identifying this action as an appeal from a magistrate judgment.
4. **Plaintiff.** Enter the name(s) of the litigant(s) who initiated the appeal (appellant).
5. **Defendant.** Enter the name of the litigants contesting the appeal (appellee).

An example of a completed JS-5 for a Magistrate Appeal is provided in Exhibit D-9 of this Title.

- H. Three-Year-Old Cases.** If an action has been pending for more than three years and no activity has occurred for more than 12 months, and all presently contemplated proceedings have been completed, the clerk of court may submit a JS-6 report to remove the action as a pending matter. If a minute entry is desired, it may be phrased as follows:

"This case having been pending for over three years, all presently contemplated proceedings having been completed, and there having been no action herein for over 12 months, there appears to be no further reason at this time to maintain the file as an open one for statistical purposes, and the Clerk is instructed to submit a JS-6 form to the Administrative Office."

Transmittal 64, Volume XI
Title II
March 1, 1985

"Nothing contained in this minute entry shall be considered a dismissal or disposition of this matter, and, should further proceedings in it become necessary or desirable, any party may initiate it in the same manner as if this minute entry had not been entered."*

* Approved by the Subcommittee on
Judicial Statistics April 26, 1973.

If the clerk of court deems it necessary to reopen the action from a statistical standpoint, the procedures contained in **Section III.E.** (page 37) should be used.

EXHIBIT A
Administrative Agency Codes

Benefits Review Board	BRB
Civil Aeronautics Board	CAB
Civil Service Commission (U.S.)	CSC
Commodity Futures Trading Commission	CFTR
Consumer Products Safety Commission	CPSC
Copyright Royalty Tribunal	CRT
Department of Agriculture	AGRI
Department of Commerce	COMM
Department of Defense	DOD
Department of Education	EDUC
Department of Energy	DOE
Department of Health, Education and Welfare	HEW
Department of Health and Human Services	HHS
Department of Housing and Urban Development	HUD
Department of Interior	DOI
Department of Justice	DOJ
Department of Labor (Except OSHA)	LABR
Department of Transportation, National Transportation Safety Board	TRAN
Department of the Treasury (Except IRS)	TREA
Drug Enforcement Agency	DEA
Environmental Protection Agency	EPA
Equal Employment Opportunity Commission	EEOC
Federal Aviation Administration	FAA
Federal Coal Mine Safety Board	FCMS
Federal Communications Commission	FCC
Federal Deposit Insurance Corporation	FDIC
Federal Election Commission	FEC
Federal Energy Agency	FEA
Federal Energy Regulatory Commission	FERC
Federal Home Loan Bank Board	FHLB
Federal Labor Relations Authority	FLRA
Federal Maritime Board	FMBD
Federal Maritime Commission	FMC
Federal Mine Safety and Health Administration	MSHA

Transmittal 64, Volume XI
Title II
March 1, 1985

EXHIBIT A
(continued)

Federal Mine Safety and Health Review Commission	MSHR
Federal Reserve System	FRS
Federal Trade Commission	FTC
Food and Drug Administration	FDA
General Services Administration	GSA
Government Accounting Office	GAO
Immigration and Naturalization Service	INS
Internal Revenue Service	IRS
Interstate Commerce Commission	ICC
Merit Systems Protection Board	MSPB
National Credit Union Association	NCUA
National Labor Relations Board	NLRB
Nuclear Regulatory Commission	NRC
Occupational Safety and Health Administration	OSHA
Occupational Safety and Health Review Commission	OSHC
Office of Management and Budget	OMB
Office of Personnel Management	OPM
Office of Workers Compensation Program	OWCP
Patent Office	PATO
Postal Rate Commission (U.S.)	PRC
Postal Service (U.S.)	USPS
RR Retirement Board	RRRB
Securities and Exchange Commission	SEC
Small Business Administration	SBA
Tax Court, Internal Revenue Service	TXCT
Veterans Administration	VET

Transmittal 64, Volume XI
 Title II
 March 1, 1985

EXHIBIT B
Commonly Used Statutes

Name of Statute	Nature of Suit Code
Administrative Procedure Act 5 USC:701-706	289
Age Discrimination in Employment Act 29:621:634	442
Agricultural Acts 7:612C, 1301, 1441-1446	891
Agricultural Adjustment Act 7:281:1407	891
Agricultural Adjustment Act - penalty 7:281-1407	610
Agricultural Fair Practice Act 7:2301-2306	891
Agricultural Marketing Agreement Act 7:601-659	891
Air Pollution Control Act 42:1857-57L	893
Anti-Kickback Act	370
Anti-Trust Acts 15:1,26	410
Anti-Trust Civil Process Act 15:1311-1314	410
Arbitration Act - maritime transactions 9:3120	120
labor disputes 28:1292:151-163	720
Armed Forces Leave Act 37:501	190
Atomic Energy Act	890
Automobile Dealers' Day in Court 15:1221-1225	890
Back Pay Act P.L. 89-380,80 Stat. 94	190
Bail Reform Act 18:3146	190
Banking Act 12:300-632	430
Bankruptcy Appeal to District Court 28:158	422
Bankruptcy Withdrawal 28:157	423
Black Lung Benefits (Federal Coal Mine Health & Safety Act)	862
Boiler Inspection Acts 45:22-29, 31-34	640
Capehart Housing Act 12:1701 42:1401	890
Carmack Amendments to Hepburn Act 49:20, 94 stat 593	450
Carriage of Goods by Sea Act 46:1300-1315	120
Career Compensation Act 37:231	490
Civil Aeronautics Act 49:401	890
Civil Rights Act 42:1981, 1983, 1985, 1988 2000	440
Civil Rights Act (Prisoner Petition)	550
Civil Rights Act, Voting 42:1971, 1973-73p	441
Clean Air Act 42:1857:57L	893
Commodity Credit Corporation Act 15:713a-1 & 4	891
Commodity Exchange Act 7:1-17b	850
Communications Act 47:151 et seq	890
Consumer Credit Protection Act	
Interest rates 15:1600 et seq	370
Bad Credit Rating	320
Comm. Hatch Act (Report & Order of) 5 USC 118K(c)	212
Connally Act, Hot Oil Act Interstate Commerce 15:715,15K	341
Conservation Act of 1969 16:668 cc-1266 8cc-6	890
Consumer Products Safety Act 15:2072	890
Personal Injury	360
Davis - Bacon Act 40:276a	790
Disaster Relief Act 42:1855	890
Due Process of Law (5th Amendment)	440

EXHIBIT B
 (continued)

Name of Statute	Nature of Suit Code
Economic Opportunities Act 42:2701	440
Economic Stabilization Act P.L. 92:201-301, 12:1904	892
Educational Professions Development Act 20:1091	890
Egg Products Inspection Act 28:1031-1056	891
Emergency School Aid Act	890
Employee Retirement Income Security Act of 1974 (29:1132)	791
Endangered Species Act	690
Elkins Act 49:41-43	450
Equal Employment Opportunity Act (Title VII) 42:2000e	442
Equal Pay Act 29:206	710
Executive Order 11615 (freezing prices)	892
Executive Order 11632 (freezing prices)	892
Fair Credit Reporting Act 15:1681	370
Fair Housing Act (Title VII) 42:3601-3612	443
Fair Labor Standards Act 15:1	410
False Claims Act 31:231 et seq	370
Farmers' Home Administration Act 7:0001-1005d, 1007-1009, 1015-1031	140
Federal Credit Union Acts 12:1751-1771	430
Federal Metal & Nonmetallic Mine Safety Act 30:721	169
Foreign Agents Registration Act 22:611-621	890
Federal Aid Highway Act 23:101-142	890
Federal Aviation Act 49:1301 et seq	890
Federal Aviation Act, penalty 49:1301	650
Federal Coal Mine Health & Safety Act 30:801 et seq	890
in connection with HEW	862
penalty	690
Federal Corrupt Practices Act 2:241-256	890
Federal Crop Insurance Act 7:1501-1550	891
Federal Election Campaign Act	890
Federal Employer's Liability Act (Railroads) 45:51-60	330
Federal Environment Pesticide Control Act	893
Federal Food, Drug & Cosmetic Act 21:301 et seq	890
forfeiture or penalty 21:333-334	620
Federal Hazardous Substance Act 15:1261	690
Federal Home Loan Bank Act 12:1421-1449	430
Federal Insecticide, Fungicide & Rodenticide Act 7:135	893
Federal Meat Inspection Act c.403-45 Stat. 351	890
Federal Medical Care Recovery Act	190
Federal Odometer Disclosure Act 49:404, 408b	370
Federal Order #96	891
Federal Pay Comparability Act 5:5301	890
Federal Reemployment Rights (Universal Military Training & Service Act 50:459)	190
Federal Reserve Acts 12:142 et seq	430
Federal Seed Act 7:1551-1610	610
Federal Trade Commission Act 15:41-51	890
penalty	690
Federal Water Pollution Control Act 33:1151 et seq	893

Transmittal 64, Volume XI
 Title II
 March 1, 1985

EXHIBIT B
 (continued)

Name of Statute	Nature of Suit Code
Flammable Fabrics Act (If personal injury).....	360
Food & Drug Act (Federal) 21:301 et seq	620
Food Stamp Act 7:2011-2025	891
Franking Mail Privilege	370
Freedom of Information Act 5:552	895
Game & Wildlife Act 15:256c et seq (penalty)	690
Garnishments 42:459, P.L. 93-647	150
Harter Act (Carriage of Goods by Sea) 46:190-195	120
Habeas Corpus 28:2241,2254	530
Health Insurance for the Aged Act 42:1395	860
Highway Safety Act 23:401	890
Home Owners Loan Act 12:1461	430
negotiable instrument	140
foreclosure	220
Hours of Service Acts (Railroads) 45:61-66	640
Immigration Acts (habeas corpus & review)	
8:1101/18:1546	460
Immigration & Nationality Act 8:1503	890
Industrial Accident Board	360
Internal Revenue Code (General)	870
Internal Revenue Code - Tax Reform Act of 1976	
(P.L. 94-455) Third Party	871
Interstate Commerce Acts 49:1 et seq, 49:301	450
Interstate & Foreign Commerce by Wire & Radio Communications	
Federal Communications Act 37:USC 151-609	389
Interstate Land Sales Full Disclosure Act 15:1701	370
Investment Advisers Act 15:80b(1-21)	850
Jones Act (Merchant Marine) 46:688	340
Klamath Termination Act 25:564-564w-1	890
Labor Certification (Department of Labor defendant)	790
Labor-Management Relations Act 29:141-187	720
Labor-Management Reporting & Disclosure Act 29:153-160,	
401 et seq	730
Land Condemnation 40:258(a)	210
Land & Water Conservation Fund Act 16:4602, 460 1-4	893
Landrum-Griffin Act 29:153-160, 401 et seq	730
Lanham Patent Act 35:134-146	830
Lanham Trade-Mark Act 15:1051-1127	840
Limitation of Liability (Exoneration from) 46:189-196	380
Limited Liability Acts (Shipping) 46:182-196	380
Lloyd-La Follette Act 5:5595, 7101-2, 7501	890
Load Line Act 46:85-85g	690
Longshoremen's & Harbor Workers' Compensation Act	
33:901-950	340
McGuire Bill (Federal Fair Trade) 15:45	890
15:45L Penalty	690
Manpower Development & Training Act 42:2571	890
Marihuana Tax Act 50 stat 551	690
Medical Care Recovery Act 42:2651	190



Transmittal 64, Volume XI
 Title II
 March 1, 1985

EXHIBIT B
 (continued)

Name of Statute	Nature of Suit Code
Medical Malpractice	190
Medicare Act 42:1395	362
Cases filed by U.S. against doctors, hospitals, & nursing homes - for receiving over payments	151
Miller Act 40:270 et seq	130
Miller-Tydings Fair Trade Act 15:1	410
Miller Land Leasing Act	230
Motion to Vacate Sentence 28:2255	510
Motorboat Act 46:526-526t	690
Motor Vehicle Air Pollution Control Act 42:1857f-1-8	893
Motor Vehicle Information & Cost Saving Act	890
odometer fraud	370
Mutual Security Act 22:1750	890
Narcotic Addict Rehabilitation Act 42:3411-26, Title III P.L. 89-793	970
National Environmental Policy Act 42:4321, 4331-35, 4341-47	893
National Flood Insurance Act of 1968 42:4001	890
insurance contract	110
National Housing Act 12:1701-1749	890
National Insurance Development Program 12:1749b	219
National School Lunch Act 42:1751	444
National Service Life Insurance Act 38:701-724, 781-788	110
National Traffic & Motor Vehicle Safety Act 49:1655	890
penalty 49:1655	690
Natural Gas Pipeline Safety Act 49:1671-1700	890
Naturalization Acts 8:1421/18:911,1015,1421, et seq., 3282	890
Newspaper Preservation Act 15:1801-1804	410
Non-Resident Motorist Act	110
Norris-La Guardia Act (labor disputes) 29:101-115	720
Occupational Safety & Health Act 29:553, 651-678	790
penalty, personal injury	660
Oil Pollution Act 33:431-437, 1001-1015	360
Outer Continental Shelf Lands Act, personal injury 43:1331	340
Packers & Stock Yards Act 7:181-231	891
7:207(g) (h), 221 penalty	610
Parole Commission Review (U.S.)	520
Patents 35:1-293	830
Performance Rating Act of 1950 5:4303	442
Postal Reorganization Act Title 39	890
labor dispute	720

EXHIBIT B
 (continued)

Name of Statute	Nature of Suit Code
Prisoner Petitions	550
Habeas Corpus 28:2241, 2254, prison officials	530
Mandamus, prison officials	540
Motions to vacate sentence 28:2255	510
Civil Rights	550
Public Vessels Act 46:781-790, personal injury	340
Railroad Retirement Act 45:228a	740
Railway Labor Act 45:151-163, 181-188	740
Railway Passenger Service Act 45:501	450
Renegotiation Act 50:1191	190
Reclamation Act 43:371	890
Reorganization Act 5:901-913	890
River & Harbor Act	893
penalty 3:401-437, 1251	893
Robinson-Patman Act 15:13c	410
Safety Appliance Acts (Interstate Commerce) 45:1/49:26	640
Securities Act 15:77	850
Securities Exchange Act 15:78	850
Selective Service Act 50:451-470, 1001-1017	810
Servicemen's Readjustment Act c.268 stat. 284	140
Sherman Anti-Trust Act 15:1-7	410
Ship Mortgage Act 46:911	120
Shipping Act 46:841	890
Small Business Act 15:631	140
Small Business Investment Act 15:681	850
Social Security Act 42:216-223, 301-1399	860
Medicare 42:1395, 1814	860
Welfare 42:602	444
Soil Bank Act 7:1801-1837	891
Soil Conservation & Domestic Allotment Act 16:59a	610
Soldiers' & Sailors' Civil Relief Act 50:501	140
foreclosure	220
Stock Raising Homestead Act 42 USC 291-302	123
Surplus Property Act 40:471,50:1622	190
Taft-Hartley Act 29:141	720
Taylor Grazing Act 43:315	230
Thirty-Six Hour Law 45:74	640
Trade-Mark Acts 15:1051-1127	840
Trading with the Enemy Acts 50:1	890
Transportation Acts 49:66	450
Trust Indenture Act 15:77	850
Truth in Lending Act 15:1601-13, 1631-41, 1671-77	370
Tucker Act (Claims) c.359, 24 stat. 505	190
Twenty-Eight Hour Law 45:71-74	640
Uninsured Motorist Act	110
United States Warehouse Act 7:241	891
Universal Military Training & Service Act 50:451-471	190
Uniform Bill of Lading 49:81-124	450

Transmittal 64, Volume XI
Title II
March 1, 1985

EXHIBIT B
(continued)

Name of Statute	Nature of Suit Code
Uniform Grain Storage Agreement.....	891
Uniform Relocation Assistance & Real Property Acquisition Policies Act P.L. 91-646, 84 stat. 1894.....	290
Veterans' Benefit Act, Title 38 penalty	690
Veterans' Preference Act	190
Vietnam Era Veterans Readjustment Assistance Act of 1974 (38:2021)	190
Voting Rights Act 42:1971, 1973-73p	441
Wagner-Peyser Act 29:49, 557	790
War Claims Act 10:2734, 2735	890
Welfare Pension Plan Disclosure Act 29:301-309	790
Wholesome Meat Act 21:601	891
Wiretaps 47:605	320

EXHIBIT C
Instructions for Completing the JS-44

Instructions for Attorneys Completing
Civil Cover Sheet Form JS-44A, B, or C.

Authority For Civil Cover Sheet.

The JS-44 civil cover sheet and the information contained herein neither replaces nor supplements the filings and service of pleadings or other papers as required by law, except as provided by local rules of court. This form, approved by the Judicial Conference of the United States in September 1974, is required for the use of the clerk of court for the purpose of initiating the civil docket sheet. Consequently, a civil cover sheet is submitted to the clerk of court for each civil complaint filed. The attorney filing a case should complete the form using the instructions provided in this exhibit.

I. Civil Cover Sheet.

- A. Plaintiffs - Defendants.** Enter names (last, first, middle initial) of plaintiff and defendant. If the plaintiff or defendant is a government agency, use only the full name or standard abbreviations. If the plaintiff or defendant is an official within a government agency, identify first the agency and then the official, giving both name and title.
- B. County of Residence.** For each civil case filed, except U.S. plaintiff cases, enter the name of the county where the first listed plaintiff resides at the time of filing. In U.S. plaintiff cases, enter the name of the county in which the first listed defendant resides at the time of filing. (**Note:** In land condemnation cases, the county of residence of the "defendant" is the location of the tract of land involved.)
- C. Attorneys.** Enter firm name, address, telephone number, and attorney of record. If there are several attorneys, list them on the reverse side, noting in this section "(see reverse)."

EXHIBIT C
(continued)

- II. Basis of Jurisdiction.** The basis of jurisdiction is set forth under Rule 8(a), (F.R.Cv.P.) which requires that jurisdiction be shown in pleadings. Place an "X" in one of the boxes. If there is more than one basis of jurisdiction, precedence is given in the order shown below.
- A. U.S. government plaintiff.** (1) Jurisdiction is based on Title 28 U.S.C. Sections 1345 and 1348. Suits by agencies and officers of the United States are included here.
- B. U.S. government defendant.** (2) When the plaintiff is suing the U.S., its officers or agencies, place an "X" in this box.
- C. Federal Question.** (3) This refers to suits under Title 28 U.S.C. Section 1331 where jurisdiction arises under the Constitution of the U.S., an amendment to the Constitution, an act of Congress, or a treaty of the U.S. In cases where the U.S. is a party, the U.S. plaintiff or defendant code takes precedence and box 1 or 2 should be marked.
- D. Diversity of citizenship.** (4) (JS-44A, or C only) This refers to suits under Title 28 U.S.C. Section 1332 where parties are citizens of different states. When Box 4 is checked, the citizenship of the different parties must be checked. (See Part III below.) (Federal question actions take precedence over diversity cases.)
- E. Local Question.** (5) (JS-44B only) Check this box for proceedings under local civil law.
- *III. Residence Citizenship of Principal Parties (JS-44A and C only) or Remarks. (JS-44B only).** This section of the JS-44A or JS-44C is to be completed if diversity of citizenship was indicated above. Mark this section for each principal party. This section of form JS-44B may be used for remarks.
- IV. Cause of Action.** Report the civil statute under which you are filing and give a brief description of the cause.

EXHIBIT C
(continued)

- V. Nature of Suit.** Place an "X" in the appropriate box. If the nature of suit cannot be determined, be sure the cause of action description, in Part (IV), is sufficient to enable the deputy clerk or the statistical clerks in the AO to determine the nature of suit. If the cause fits more than one nature of suit, select the most definitive.
- VI. Origin.** Place an "X" in one of the seven boxes.
- A. Original Proceeding.** (1) Cases which originate in U.S. district courts.
- B. Removed from State Court.** (2) Proceedings initiated in state courts may be removed to the district courts under Title 28 U.S.C., Section 1441. When the petition for removal is granted, check this box.
- C. Remanded from Appellate Court.** (3) Check this box for cases remanded to the district court for further action. Use the date of remand as the filing date.
- D. Reinstated or Reopened.** (4) Check this box for cases reopened or reinstated in the district court. Use the reopening date as the filing date.
- E. Transferred from Another District.** (5) For cases transferred under Title 28 U.S.C. Section 1404 (a). Do not use this for within district transfers or multidistrict litigation transfers.
- F. Multidistrict Litigation.** (6) Check this box when a multidistrict case is transferred into the district under authority of Title 28 U.S.C., Section 1407. When this box is checked do not check (5) above.
- G. Appeal to District Judge from Magistrate Judgment.** (7) Check this box for an appeal from a magistrate's decision.

EXHIBIT C
(continued)

VII. Requested in Complaint.

- A. Class Action.** Place an "X" in this box if you are filing a class action under Rule 23 F.R.Cv.P.
- B. Demand.** In this space enter the dollar amount (in thousands of dollars) being demanded or indicate other demand such as a preliminary injunction.
- C. Jury Demand.** Check the appropriate box to indicate whether or not a jury is being demanded.

VIII. Remarks (JS-44A only) or Related Cases (JS-44C only). This section of form JS-44A may be used for remarks. This section of the JS-44C is used to reference related pending cases if any. If there are related pending cases, insert the docket numbers and the corresponding judge names for such cases.

IX. Date and Attorney Signature. Date and sign the civil cover sheet.

Transmittal 64, Volume XI
 Title II
 March 1, 1985

EXHIBIT D-1: Federal Question Jurisdiction

DIST	OFF.	DOCKET		FILING DATE			J	N/S	O	D		R	\$ DEMAND	JUDGE/ MAG. NO.	COUNTY
		YR.	NUMBER	MO.	DAY	YEAR				PTF	DEF				
08060	1	85	00026	01	21	85	3	440	1				Nearest \$1,000 10	J 6053 M 6022	05037
<p>Harvey, June</p> <p>(D-1) Ross, Kirk D., Director Arkansas Department of Public Aid, individually and in his official capacity</p> <p>(D-2) Arkansas Department of Public Aid, a state agency</p> <p style="text-align: center;">CAUSE (CITE THE U.S. CIVIL STATUTE UNDER WHICH THE CASE IS FILED AND WRITE A BRIEF STATEMENT OF CAUSE)</p> <p>42 U.S.C. 6104(e). State and Local Assistance Act of 1972. Action to enjoin violations.</p> <p><small>JS-5 (Rev. 7/80) Mail to: Statistical Analysis and Reports Division, Administrative Office of the U.S. Courts, Washington, D.C. 20544</small></p>															

Volume XI Page II-55

Transmittal 64, Volume XI
 Title II
 March 1, 1985

EXHIBIT D-2: Diversity of Citizenship Jurisdiction

DIST	OFF.	DOCKET YR. NUMBER	FILING DATE			J	N/S	O	D		R	\$ DEMAND	JUDGE/ MAG. NO.	COUNTY
			MO.	DAY	YEAR				PTF	DEF				
0645	2	85 00102	01	06	85	4	190	5	4	1		Nearest \$1,000	J 4576 M 4522	26001
<p> First Professional Leasing Company Jenkins, Keith, M.D. </p> <p>CAUSE (CITE THE U.S. CIVIL STATUTE UNDER WHICH THE CASE IS FILED AND WRITE A BRIEF STATEMENT OF CAUSE)</p> <p>Transferred from Western District of Michigan pursuant to 28 U.S.C. 1401(a) Breach of lease agreement; diversity, 28 U.S.C. 1332.</p> <p><small>JS-5 (Rev. 7/80) Mail to: Statistical Analysis and Reports Division, Administrative Office of the U.S. Courts, Washington, D.C. 20544</small></p>														

DIST	OFF.	DOCKET YR. NUMBER	FILING DATE			J	N/S	O	D		R 23	\$ DEMAND	JUDGE/ MAG. NO.	COUNTY
			MO.	DAY	YEAR				PTF	DEF				
0541	4	85 00601	02	07	85	3	790	1			1	Nearest \$1,000	J 4179 M 41 ZZ	48277
<p>Waters, David, et. al. Gulfline Shipping Co.</p> <p>CAUSE (CITE THE U.S. CIVIL STATUTE UNDER WHICH THE CASE IS FILED AND WRITE A BRIEF STATEMENT OF CAUSE)</p> <p>42:1653; 33:918, 921-Longshoremen's and Harbor Compensation Act.</p>														
<p>JS-5 (Rev. 7/80) Mail to: Statistical Analysis and Reports Division, Administrative Office of the U.S. Courts, Washington, D.C. 20544</p>														

EXHIBIT D-3: Class Action

Transmittal 64, Volume XI
Title II
March 1, 1985



Transmittal 64, Volume XI
 Title II
 March 1, 1985

EXHIBIT D-4: U.S. Defendant

DIST	OFF.	DOCKET YR. NUMBER	FILING DATE MO. DAY YEAR	J	N/S	O	D		R 23	\$ DEMAND	JUDGE/ MAG. NO.	COUNTY
							PTF	DEF				
0422	1	85 00077	01 09 85	2	110	1				Nearest \$1,000 15	J 2272 M 227Z	51013
<p>Frye, David L. USA</p> <p style="text-align: center;">CAUSE (CITE THE U.S. CIVIL STATUTE UNDER WHICH THE CASE IS FILED AND WRITE A BRIEF STATEMENT OF CAUSE)</p> <p style="text-align: center;">5 U.S.C. 8912 - Recovery of health benefits for Federal employee.</p> <p>JS-5 (Rev. 7/80) Mail to: Statistical Analysis and Reports Division, Administrative Office of the U.S. Courts, Washington, D.C. 20544</p>												

DIST	OFF.	DOCKET YR. NUMBER	FILING DATE			J	N/S	O	D		R 23	\$ DEMAND	JUDGE/ MAG. NO.	COUNTY
			MO.	DAY	YEAR				PTF	OFF				
097-	3	85 01006	02	05	85	1	210	1				Nearest \$1,000	J 7-81 M 7-ZZ	02020
<p> Federal Mine Safety and Health Review Commission Diggs, Marjorie B., et. al. </p> <p>CAUSE (CITE THE U.S. CIVIL STATUTE UNDER WHICH THE CASE IS FILED AND WRITE A BRIEF STATEMENT OF CAUSE)</p> <p>16 U.S.C. 807 - Condemnation proceedings to take over licensed project.</p> <p>JS-5 (Rev. 7/80) Mail to: Statistical Analysis and Reports Division, Administrative Office of the U.S. Courts, Washington, D.C. 20544</p>														

EXHIBIT D-5: U.S. Plaintiff

Transmittal 64, Volume XI
Title II
March 1, 1985



Transmittal 64, Volume XI
 Title II
 March 1, 1985

EXHIBIT D-6: Motion to Vacate Sentence (2255)

DIST	OFF.	DOCKET YR. NUMBER	FILING DATE			J	N/S	O	D		R 23	\$ DEMAND	JUDGE/ MAG. NO.	COUNTY
			MO.	DAY	YEAR				PTF	OFF				
0864	4	85 01015	06	29	85	2	510	1				Nearest \$1,000	J 6492 M 64 22	27077
Kilbourne, Kathy 84-00829-01 United States of America														
CAUSE (CITE THE U.S. CIVIL STATUTE UNDER WHICH THE CASE IS FILED AND WRITE A BRIEF STATEMENT OF CAUSE)														
Motion to vacate 28 U.S.C. 2255.														
<small>JS-5 (Rev. 7/80) Mail to: Statistical Analysis and Reports Division, Administrative Office of the U.S. Courts, Washington, D.C. 20544</small>														



DIST	OFF.	DOCKET YR. NUMBER	FILING DATE			J	N/S	O	D		R	\$ DEMAND	JUDGE/ MAG. NO.	COUNTY
			MO.	DAY	YEAR				PTF	DEF				
1087	5	85 00757	03	04	85	3	422	1				Nearest \$1,000	J 8761 M 8722	40143
<p> Dublin Research Facility, Inc. 84-00410 Cardozo Legal Institute </p> <p>CAUSE (CITE THE U.S. CIVIL STATUTE UNDER WHICH THE CASE IS FILED AND WRITE A BRIEF STATEMENT OF CAUSE)</p> <p>Appeal of bankruptcy decision, 28 U.S.C. 158.</p> <p>JS-5 (Rev. 7/80) Mail to: Statistical Analysis and Reports Division, Administrative Office of the U.S. Courts, Washington, D.C. 20544</p>														

EXHIBIT D-7: Bankruptcy Appeal

Transmittal 64, Volume XI
Title II
March 1, 1985



Transmittal 64, Volume XI
 Title II
 March 1, 1985

EXHIBIT D-8: Bankruptcy Withdrawal

DIST	OFF.	DOCKET YR. NUMBER	FILING DATE			J	N/S	O	D		R	\$ DEMAND	JUDGE/ MAG. NO.	COUNTY
			MO.	DAY	YEAR				PTF	REV				
0101	1	85 06072	04	09	85	3	423	1				Nearest \$1,000	J 0182 M 01 ZZ	25011
<p>Miller, Clyde J. (#85-00010)</p> <p>Ripley Timesharing Inc., et. al.</p> <p style="text-align: center;">CAUSE (CITE THE U.S. CIVIL STATUTE UNDER WHICH THE CASE IS FILED AND WRITE A BRIEF STATEMENT OF CAUSE)</p> <p>28 U.S.C. 157 - Bankruptcy withdrawal; complaint to recover property.</p> <p><small>JS-5 (Rev. 7/80) Mail to: Statistical Analysis and Reports Division, Administrative Office of the U.S. Courts, Washington, D.C. 20544</small></p>														

Volume XI Page II-62



DIST	OFF.	DOCKET YR. NUMBER	FILING DATE			J	N/S	O	D		R	\$ DEMAND	JUDGE/ MAG. NO.	COUNTY
			MO.	DAY	YEAR				PTF	DEF				
0208	8	85 01065	04	29	85	3	450	7				Nearest \$1,000	J 0894 M 08ZZ	
<p> Suddaby Freight Enterprises Meadowland Carriers, Inc. </p> <p>CAUSE (CITE THE U.S. CIVIL STATUTE UNDER WHICH THE CASE IS FILED AND WRITE A BRIEF STATEMENT OF CAUSE)</p> <p>Action to recover default payments on guaranteed railroad common carrier loans - 49 U.S.C. 1236.</p> <p>JS-5 (Rev. 7/80) Mail to: Statistical Analysis and Reports Division, Administrative Office of the U.S. Courts, Washington, D.C. 20544</p>														

EXHIBIT D-9: Magistrate Appeal

Transmittal 64, Volume XI
Title II
March 1, 1985

DIST.	OFF.	DOCKET YR.	DOCKET NUMBER	TERMINATION MO.	TERMINATION DAY	TERMINATION YR.	J	N/S	O	D PTF	D DEF	R 23	\$ DEMAND	JUDGE/MAG. NO.	COUNTY												
0754	4	85	00164	01-02-85	04-06-85		4	310	5	4	5		Nearest \$1,000	J 5480 M 5422													
<p>I Procedural Progress at Termination</p> <p>1 <input type="checkbox"/> before issue joined</p> <p>2 <input type="checkbox"/> after motion decided but before issue joined</p> <p>3 <input type="checkbox"/> issue joined, no other court action</p> <p>4 <input type="checkbox"/> issue joined, and after judgment of court on motion</p> <p>5 <input type="checkbox"/> issue joined, and after pretrial conference but before trial</p> <p>6 <input type="checkbox"/> during court trial</p> <p>7 <input type="checkbox"/> during jury trial</p> <p>8 <input type="checkbox"/> after court trial</p> <p>9 <input checked="" type="checkbox"/> after jury trial</p> <p>0 <input type="checkbox"/> Other (specify on reverse)</p>							<p>II Disposition</p> <p>0 <input type="checkbox"/> Transfer to other District</p> <p>1 <input type="checkbox"/> Remanded to state court</p> <p>2 <input type="checkbox"/> Dismissed for want of prosecution</p> <p>3 <input type="checkbox"/> Dismissed, discontinued, settled, withdrawn, etc.</p> <p>Judgment on</p> <p>4 <input type="checkbox"/> Default</p> <p>5 <input type="checkbox"/> Consent</p> <p>6 <input type="checkbox"/> motion before trial</p> <p>7 <input type="checkbox"/> jury verdict</p> <p>8 <input checked="" type="checkbox"/> directed verdict (jury trial)</p> <p>9 <input type="checkbox"/> court trial</p> <p>X <input type="checkbox"/> Other</p>							<p>III Nature of Judgment</p> <p>0 <input type="checkbox"/> No monetary award</p> <p>1 <input type="checkbox"/> \$ <u>100</u> only Nearest \$1,000</p> <p>2 <input type="checkbox"/> \$ _____ and other (indicate on reverse)</p> <p>3 <input type="checkbox"/> Injunction</p> <p>4 <input type="checkbox"/> Other, foreclosure, condemnation, remand, etc.</p> <p>5 <input type="checkbox"/> Costs only</p> <p>IV Judgment For:</p> <p>1 <input checked="" type="checkbox"/> Plaintiff</p> <p>2 <input type="checkbox"/> Defendant</p> <p>3 <input type="checkbox"/> Both</p> <p>4 <input type="checkbox"/> Unknown</p>							<p>V Involvement of U.S. Magistrate</p> <p>1 <input type="checkbox"/> Consent of parties to magistrate judgment (CCA appeals)</p> <p>2 <input type="checkbox"/> Consent of parties to magistrate judgment (USDC appeals)</p> <p>3 <input type="checkbox"/> Special master reference</p> <p>4 <input type="checkbox"/> All pretrial matters, including dispositive motions</p> <p>5 <input type="checkbox"/> Report and recommendation on dispositive motions</p> <p>6 <input type="checkbox"/> All pretrial matters, except dispositive motions</p> <p>7 <input type="checkbox"/> Full pretrial/settlement conferences</p> <p>8 <input type="checkbox"/> Non-dispositive motions</p> <p>0 <input type="checkbox"/> No involvement of magistrate</p> <p>VI Involvement Other than Judge or Magistrate</p> <p>1 <input type="checkbox"/> Arbitrator</p> <p>2 <input type="checkbox"/> Land Commissioner</p> <p>3 <input type="checkbox"/> Special master (other than magistrate)</p> <p>4 <input type="checkbox"/> Other (specify)</p> <p>0 <input type="checkbox"/> No involvement other than judge or magistrate</p>						
SHOW DATES		Date Issue Joined		Date Pretrial Conference		Date Trial Began		Date Trial Ended																			
If applicable		01-29-85		02-28-85		03-09-85		04-06-85																			

JS-6 (Rev. 7/80) Mail to: SARD, Administrative Office of the U.S. Courts, Washington, D.C. 20544

EXHIBIT E-1: Diversity of Citizenship Jurisdiction

Transmittal 64, Volume XI
Title II
March 1, 1985

EXHIBIT E-2: Federal Question Jurisdiction

DIST.	OFF.	DOCKET YR.	DOCKET NUMBER	TERMINATION MO.	DAY	YR.	J	N/S	O	D PTF	R DEF	23	\$ DEMAND	JUDGE/ MAG. NO.	COUNTY																
0313	2	85	01611	03	25	85	3	710	1				Nearest \$1,000	J 1391 M 13ZZ	42101																
03-25-85																															
<table border="0" style="width: 100%;"> <tr> <td colspan="4" style="vertical-align: top;"> I Procedural Progress at Termination 1 <input type="checkbox"/> before issue joined 2 <input type="checkbox"/> after motion decided but before issue joined 3 <input type="checkbox"/> issue joined, no other court action 4 <input type="checkbox"/> issue joined, and after judgment of court on motion 5 <input type="checkbox"/> issue joined, and after pretrial conference but before trial 6 <input type="checkbox"/> during court trial 7 <input type="checkbox"/> during jury trial 8 <input checked="" type="checkbox"/> after court trial 9 <input type="checkbox"/> after jury trial 0 <input type="checkbox"/> Other (specify on reverse) </td> <td colspan="4" style="vertical-align: top;"> II Disposition 0 <input type="checkbox"/> Transfer to other District 1 <input type="checkbox"/> Remanded to state court 2 <input type="checkbox"/> Dismissed for want of prosecution 3 <input type="checkbox"/> Dismissed, discontinued, settled, withdrawn, etc. <u> </u> Judgment on 4 <input type="checkbox"/> Default 5 <input type="checkbox"/> Consent 6 <input type="checkbox"/> motion before trial 7 <input type="checkbox"/> jury verdict 8 <input type="checkbox"/> directed verdict (jury trial) 9 <input checked="" type="checkbox"/> court trial X <input type="checkbox"/> Other </td> <td colspan="4" style="vertical-align: top;"> III Nature of Judgment 0 <input type="checkbox"/> No monetary award 1 <input checked="" type="checkbox"/> \$ <u>5</u> only Nearest \$1,000 2 <input type="checkbox"/> \$ <u> </u> and other (indicate on reverse) 3 <input type="checkbox"/> Injunction 4 <input type="checkbox"/> Other, foreclosure, condemnation, remand, etc. 5 <input type="checkbox"/> Costs only IV Judgment For: 1 <input checked="" type="checkbox"/> Plaintiff 2 <input type="checkbox"/> Defendant 3 <input type="checkbox"/> Both 4 <input type="checkbox"/> Unknown </td> <td colspan="4" style="vertical-align: top;"> V Involvement of U.S. Magistrate 1 <input type="checkbox"/> Consent of parties to magistrate judgment (CCA appeal*) 2 <input type="checkbox"/> Consent of parties to magistrate judgment (USDC appeals) 3 <input type="checkbox"/> Special master reference 4 <input type="checkbox"/> All pretrial matters, including dispositive motions 5 <input type="checkbox"/> Report and recommendation on dispositive motions 6 <input type="checkbox"/> All pretrial matters, except dispositive motions 7 <input type="checkbox"/> Full pretrial/settlement conferences 8 <input type="checkbox"/> Non-dispositive motions 0 <input type="checkbox"/> No involvement of magistrate VI Involvement Other than Judge or Magistrate 1 <input type="checkbox"/> Arbitrator 2 <input type="checkbox"/> Land Commissioner 3 <input type="checkbox"/> Special master (other than magistrate) 4 <input type="checkbox"/> Other (specify) <u> </u> 0 <input type="checkbox"/> No involvement other than judge or magistrate </td> </tr> </table>																I Procedural Progress at Termination 1 <input type="checkbox"/> before issue joined 2 <input type="checkbox"/> after motion decided but before issue joined 3 <input type="checkbox"/> issue joined, no other court action 4 <input type="checkbox"/> issue joined, and after judgment of court on motion 5 <input type="checkbox"/> issue joined, and after pretrial conference but before trial 6 <input type="checkbox"/> during court trial 7 <input type="checkbox"/> during jury trial 8 <input checked="" type="checkbox"/> after court trial 9 <input type="checkbox"/> after jury trial 0 <input type="checkbox"/> Other (specify on reverse)				II Disposition 0 <input type="checkbox"/> Transfer to other District 1 <input type="checkbox"/> Remanded to state court 2 <input type="checkbox"/> Dismissed for want of prosecution 3 <input type="checkbox"/> Dismissed, discontinued, settled, withdrawn, etc. <u> </u> Judgment on 4 <input type="checkbox"/> Default 5 <input type="checkbox"/> Consent 6 <input type="checkbox"/> motion before trial 7 <input type="checkbox"/> jury verdict 8 <input type="checkbox"/> directed verdict (jury trial) 9 <input checked="" type="checkbox"/> court trial X <input type="checkbox"/> Other				III Nature of Judgment 0 <input type="checkbox"/> No monetary award 1 <input checked="" type="checkbox"/> \$ <u>5</u> only Nearest \$1,000 2 <input type="checkbox"/> \$ <u> </u> and other (indicate on reverse) 3 <input type="checkbox"/> Injunction 4 <input type="checkbox"/> Other, foreclosure, condemnation, remand, etc. 5 <input type="checkbox"/> Costs only IV Judgment For: 1 <input checked="" type="checkbox"/> Plaintiff 2 <input type="checkbox"/> Defendant 3 <input type="checkbox"/> Both 4 <input type="checkbox"/> Unknown				V Involvement of U.S. Magistrate 1 <input type="checkbox"/> Consent of parties to magistrate judgment (CCA appeal*) 2 <input type="checkbox"/> Consent of parties to magistrate judgment (USDC appeals) 3 <input type="checkbox"/> Special master reference 4 <input type="checkbox"/> All pretrial matters, including dispositive motions 5 <input type="checkbox"/> Report and recommendation on dispositive motions 6 <input type="checkbox"/> All pretrial matters, except dispositive motions 7 <input type="checkbox"/> Full pretrial/settlement conferences 8 <input type="checkbox"/> Non-dispositive motions 0 <input type="checkbox"/> No involvement of magistrate VI Involvement Other than Judge or Magistrate 1 <input type="checkbox"/> Arbitrator 2 <input type="checkbox"/> Land Commissioner 3 <input type="checkbox"/> Special master (other than magistrate) 4 <input type="checkbox"/> Other (specify) <u> </u> 0 <input type="checkbox"/> No involvement other than judge or magistrate			
I Procedural Progress at Termination 1 <input type="checkbox"/> before issue joined 2 <input type="checkbox"/> after motion decided but before issue joined 3 <input type="checkbox"/> issue joined, no other court action 4 <input type="checkbox"/> issue joined, and after judgment of court on motion 5 <input type="checkbox"/> issue joined, and after pretrial conference but before trial 6 <input type="checkbox"/> during court trial 7 <input type="checkbox"/> during jury trial 8 <input checked="" type="checkbox"/> after court trial 9 <input type="checkbox"/> after jury trial 0 <input type="checkbox"/> Other (specify on reverse)				II Disposition 0 <input type="checkbox"/> Transfer to other District 1 <input type="checkbox"/> Remanded to state court 2 <input type="checkbox"/> Dismissed for want of prosecution 3 <input type="checkbox"/> Dismissed, discontinued, settled, withdrawn, etc. <u> </u> Judgment on 4 <input type="checkbox"/> Default 5 <input type="checkbox"/> Consent 6 <input type="checkbox"/> motion before trial 7 <input type="checkbox"/> jury verdict 8 <input type="checkbox"/> directed verdict (jury trial) 9 <input checked="" type="checkbox"/> court trial X <input type="checkbox"/> Other				III Nature of Judgment 0 <input type="checkbox"/> No monetary award 1 <input checked="" type="checkbox"/> \$ <u>5</u> only Nearest \$1,000 2 <input type="checkbox"/> \$ <u> </u> and other (indicate on reverse) 3 <input type="checkbox"/> Injunction 4 <input type="checkbox"/> Other, foreclosure, condemnation, remand, etc. 5 <input type="checkbox"/> Costs only IV Judgment For: 1 <input checked="" type="checkbox"/> Plaintiff 2 <input type="checkbox"/> Defendant 3 <input type="checkbox"/> Both 4 <input type="checkbox"/> Unknown				V Involvement of U.S. Magistrate 1 <input type="checkbox"/> Consent of parties to magistrate judgment (CCA appeal*) 2 <input type="checkbox"/> Consent of parties to magistrate judgment (USDC appeals) 3 <input type="checkbox"/> Special master reference 4 <input type="checkbox"/> All pretrial matters, including dispositive motions 5 <input type="checkbox"/> Report and recommendation on dispositive motions 6 <input type="checkbox"/> All pretrial matters, except dispositive motions 7 <input type="checkbox"/> Full pretrial/settlement conferences 8 <input type="checkbox"/> Non-dispositive motions 0 <input type="checkbox"/> No involvement of magistrate VI Involvement Other than Judge or Magistrate 1 <input type="checkbox"/> Arbitrator 2 <input type="checkbox"/> Land Commissioner 3 <input type="checkbox"/> Special master (other than magistrate) 4 <input type="checkbox"/> Other (specify) <u> </u> 0 <input type="checkbox"/> No involvement other than judge or magistrate																			
SHOW DATES If applicable		Date Issue Joined	Date Pretrial Conference	Date Trial Began	Date Trial Ended																										
		01-03-85	02-03-85	03-18-85	03-25-85																										

DIST.	OFF.	DOCKET YR.	DOCKET NUMBER	TERMINATION MO.	TERMINATION DAY	TERMINATION YR.	J	N/S	O	D	R	\$ DEMAND	JUDGE/MAG. NO.	COUNTY
0526	2	85	00689	04-03-84			2	510	1			Nearest \$1,000	J 2679 M 26ZZ	001125
<div style="border: 1px solid black; width: 50px; height: 50px; margin: 0 auto; display: flex; align-items: center; justify-content: center;"> ↓ </div> <p style="text-align: center;">03-02-85</p>							<p style="text-align: center;">Rebel, Monique 85-00671-01 United States of America</p>							
I Procedural Progress at Termination 1 <input type="checkbox"/> before issue joined 2 <input type="checkbox"/> after motion decided but before issue joined 3 <input type="checkbox"/> issue joined, no other court action 4 <input checked="" type="checkbox"/> issue joined, and after judgment of court on motion 5 <input type="checkbox"/> issue joined, and after pretrial conference but before trial 6 <input type="checkbox"/> during court trial 7 <input type="checkbox"/> during jury trial 8 <input type="checkbox"/> after court trial 9 <input type="checkbox"/> after jury trial 0 <input type="checkbox"/> Other (specify on reverse)			II Disposition 0 <input type="checkbox"/> Transfer to other District 1 <input type="checkbox"/> Remanded to state court 2 <input type="checkbox"/> Dismissed for want of prosecution 3 <input type="checkbox"/> Dismissed, discontinued, settled, withdrawn, etc. Judgment on 4 <input type="checkbox"/> Default 5 <input type="checkbox"/> Consent 6 <input checked="" type="checkbox"/> motion before trial 7 <input type="checkbox"/> jury verdict 8 <input type="checkbox"/> directed verdict (jury trial) 9 <input type="checkbox"/> court trial X <input type="checkbox"/> Other			III Nature of Judgment 0 <input type="checkbox"/> No monetary award 1 <input type="checkbox"/> \$ _____ only Nearest \$1,000 2 <input type="checkbox"/> \$ _____ and other (indicate on reverse) 3 <input type="checkbox"/> Injunction 4 <input checked="" type="checkbox"/> Other, foreclosure, condemnation, remand, etc. 5 <input type="checkbox"/> Costs only IV Judgment For: 1 <input type="checkbox"/> Plaintiff 2 <input checked="" type="checkbox"/> Defendant 3 <input type="checkbox"/> Both 4 <input type="checkbox"/> Unknown			V Involvement of U.S. Magistrate 1 <input type="checkbox"/> Consent of parties to magistrate judgment (CCA appeals) 2 <input type="checkbox"/> Consent of parties to magistrate judgment (USDC appeals) 3 <input type="checkbox"/> Special master reference 4 <input type="checkbox"/> All pretrial matters, including dispositive motions 5 <input type="checkbox"/> Report and recommendation on dispositive motions 6 <input type="checkbox"/> All pretrial matters, except dispositive motions 7 <input type="checkbox"/> Full pretrial/settlement conferences 8 <input type="checkbox"/> Non-dispositive motions 0 <input type="checkbox"/> No involvement of magistrate VI Involvement Other than Judge or Magistrate 1 <input type="checkbox"/> Arbitrator 2 <input type="checkbox"/> Land Commissioner 3 <input type="checkbox"/> Special master (other than magistrate) 4 <input type="checkbox"/> Other (specify) 0 <input type="checkbox"/> No involvement other than judge or magistrate					
SHOW DATES If applicable		Date Issue Joined	Date Pretrial Conference	Date Trial Began	Date Trial Ended									
		02-16-85	02-22-85	03-01-85	03-02-85									

JS-6 (Rev. 7/80) Mail to: SARD, Administrative Office of the U.S. Courts, Washington, D.C. 20544

EXHIBIT E-3: Motion to Vacate Sentence (2255)

Transmittal 64, Volume XI
Title II
March 1, 1985




Transmittal 64, Volume XI
 Title II
 March 1, 1985

EXHIBIT E-4: U.S. Plaintiff

DIST.	OFF.	DOCKET YR. NUMBER	TERMINATION MO. DAY YR.	J	N/S	O	D		R 23	\$ DEMAND	JUDGE/ MAG. NO.	COUNTY			
							PTF	OFF							
1128	1	85 01622	01-28-85 05-05-85	1	690	1				Nearest \$1,000	J 2895 M 2822	01-093			
USA				Red Clay Pottery Mfrs., Inc.											
I Procedural Progress at Termination 1 <input type="checkbox"/> before issue joined 2 <input type="checkbox"/> after motion decided but before issue joined 3 <input type="checkbox"/> issue joined, no other court action 4 <input type="checkbox"/> issue joined, and after judgment of court on motion 5 <input checked="" type="checkbox"/> issue joined, and after pretrial conference but before trial 6 <input type="checkbox"/> during court trial 7 <input type="checkbox"/> during jury trial 8 <input type="checkbox"/> after court trial 9 <input type="checkbox"/> after jury trial 0 <input type="checkbox"/> Other (specify on reverse)				II Disposition 0 <input type="checkbox"/> Transfer to other District 1 <input type="checkbox"/> Remanded to state court 2 <input type="checkbox"/> Dismissed for want of prosecution 3 <input checked="" type="checkbox"/> Dismissed, discontinued, settled, withdrawn, etc. <u>Judgment on</u> 4 <input type="checkbox"/> Default 5 <input type="checkbox"/> Consent 6 <input type="checkbox"/> motion before trial 7 <input type="checkbox"/> jury verdict 8 <input type="checkbox"/> directed verdict (jury trial) 9 <input type="checkbox"/> court trial X <input type="checkbox"/> Other				III Nature of Judgment 0 <input type="checkbox"/> No monetary award 1 <input type="checkbox"/> \$ _____ only Nearest \$1,000 2 <input type="checkbox"/> \$ _____ and other (indicate on reverse) 3 <input type="checkbox"/> Injunction 4 <input type="checkbox"/> Other, foreclosure, condemnation, remand, etc. 5 <input type="checkbox"/> Costs only IV Judgment For: 1 <input type="checkbox"/> Plaintiff 2 <input type="checkbox"/> Defendant 3 <input type="checkbox"/> Both 4 <input type="checkbox"/> Unknown				V Involvement of U.S. Magistrate 1 <input type="checkbox"/> Consent of parties to magistrate judgment (CCA appeal) 2 <input type="checkbox"/> Consent of parties to magistrate judgment (USDC appeals) 3 <input type="checkbox"/> Special master reference 4 <input type="checkbox"/> All pretrial matters, including dispositive motions 5 <input type="checkbox"/> Report and recommendation on dispositive motions 6 <input type="checkbox"/> All pretrial matters, except dispositive motions 7 <input type="checkbox"/> Full pretrial/settlement conferences 8 <input type="checkbox"/> Non-dispositive motions 0 <input type="checkbox"/> No involvement of magistrate VI Involvement Other than Judge or Magistrate 1 <input type="checkbox"/> Arbitrator 2 <input type="checkbox"/> Land Commissioner 3 <input type="checkbox"/> Special master (other than magistrate) 4 <input type="checkbox"/> Other (specify) _____ 0 <input type="checkbox"/> No involvement other than judge or magistrate			
SHOW DATES If applicable		Date Issue Joined 01-16-85	Date Pretrial Conference 05-04-85	Date Trial Began	Date Trial Ended										
JS-6 (Rev. 7/80) Mail to: SARD, Administrative Office of the U.S. Courts, Washington, D.C. 20544															

Volume XI Page II-68

DIST.	OFF.	DOCKET		TERMINATION			J	N/S	O	D		R	\$ DEMAND	JUDGE/MAG. NO.		COUNTY																																																																																								
		YR.	NUMBER	MO.	DAY	YR.				PTF	DEF			23	J		M																																																																																							
0528	1	85	01016	 02-25-85			3	370	1			3	Nearest \$1,000	J 2803		01071																																																																																								
<table border="0" style="width: 100%;"> <tr> <td colspan="5" style="border: none;">Simpson, Barbara</td> <td colspan="12" style="border: none;">The District Construction Co., Inc.</td> </tr> <tr> <td colspan="5" style="border: none;">I Procedural Progress at Termination</td> <td colspan="5" style="border: none;">II Disposition</td> <td colspan="5" style="border: none;">III Nature of Judgment</td> <td colspan="7" style="border: none;">V Involvement of U.S. Magistrate</td> </tr> <tr> <td colspan="5" style="border: none;"> 1 <input type="checkbox"/> before issue joined 2 <input type="checkbox"/> after motion decided but before issue joined 3 <input type="checkbox"/> issue joined, no other court action 4 <input checked="" type="checkbox"/> issue joined, and after judgment of court on motion 5 <input type="checkbox"/> issue joined, and after pretrial conference but before trial 6 <input type="checkbox"/> during court trial 7 <input type="checkbox"/> during jury trial 8 <input type="checkbox"/> after court trial 9 <input type="checkbox"/> after jury trial 0 <input type="checkbox"/> Other (specify on reverse) </td> <td colspan="5" style="border: none;"> 0 <input type="checkbox"/> Transfer to other District 1 <input type="checkbox"/> Remanded to state court 2 <input type="checkbox"/> Dismissed for want of prosecution 3 <input type="checkbox"/> Dismissed, discontinued, settled, withdrawn, etc. Judgment on 4 <input type="checkbox"/> Default 5 <input type="checkbox"/> Consent 6 <input checked="" type="checkbox"/> motion before trial 7 <input type="checkbox"/> jury verdict 8 <input type="checkbox"/> directed verdict (jury trial) 9 <input type="checkbox"/> court trial X <input type="checkbox"/> Other </td> <td colspan="5" style="border: none;"> 0 <input type="checkbox"/> No monetary award 1 <input type="checkbox"/> \$ _____ only Nearest \$1,000 2 <input type="checkbox"/> \$ _____ and other (indicate on reverse) 3 <input type="checkbox"/> Injunction 4 <input type="checkbox"/> Other, foreclosure, condemnation, remand, etc. 5 <input type="checkbox"/> Costs only </td> <td colspan="7" style="border: none;"> 1 <input type="checkbox"/> Consent of parties to magistrate judgment (CCA appeal) 2 <input type="checkbox"/> Consent of parties to magistrate judgment (USDC appeals) 3 <input type="checkbox"/> Special master reference 4 <input type="checkbox"/> All pretrial matters, including dispositive motions 5 <input type="checkbox"/> Report and recommendation on dispositive motions 6 <input type="checkbox"/> All pretrial matters, except dispositive motions 7 <input type="checkbox"/> Full pretrial/settlement conferences 8 <input type="checkbox"/> Non-dispositive motions 0 <input type="checkbox"/> No involvement of magistrate </td> </tr> <tr> <td colspan="5" style="border: none;"> IV Judgment For: 1 <input type="checkbox"/> Plaintiff 2 <input checked="" type="checkbox"/> Defendant 3 <input type="checkbox"/> Both 4 <input type="checkbox"/> Unknown </td> <td colspan="7" style="border: none;"> VI Involvement Other than Judge or Magistrate 1 <input type="checkbox"/> Arbitrator 2 <input type="checkbox"/> Land Commissioner 3 <input type="checkbox"/> Special master (other than magistrate) 4 <input type="checkbox"/> Other (specify) _____ 0 <input type="checkbox"/> No involvement other than judge or magistrate </td> </tr> <tr> <td colspan="2" style="border: none;">SHOW DATES If applicable</td> <td colspan="3" style="border: none;">Date Issue Joined 01-05-85</td> <td colspan="3" style="border: none;">Date Pretrial Conference 02-03-85</td> <td colspan="3" style="border: none;">Date Trial Began</td> <td colspan="4" style="border: none;">Date Trial Ended</td> </tr> </table>																	Simpson, Barbara					The District Construction Co., Inc.												I Procedural Progress at Termination					II Disposition					III Nature of Judgment					V Involvement of U.S. Magistrate							1 <input type="checkbox"/> before issue joined 2 <input type="checkbox"/> after motion decided but before issue joined 3 <input type="checkbox"/> issue joined, no other court action 4 <input checked="" type="checkbox"/> issue joined, and after judgment of court on motion 5 <input type="checkbox"/> issue joined, and after pretrial conference but before trial 6 <input type="checkbox"/> during court trial 7 <input type="checkbox"/> during jury trial 8 <input type="checkbox"/> after court trial 9 <input type="checkbox"/> after jury trial 0 <input type="checkbox"/> Other (specify on reverse)					0 <input type="checkbox"/> Transfer to other District 1 <input type="checkbox"/> Remanded to state court 2 <input type="checkbox"/> Dismissed for want of prosecution 3 <input type="checkbox"/> Dismissed, discontinued, settled, withdrawn, etc. Judgment on 4 <input type="checkbox"/> Default 5 <input type="checkbox"/> Consent 6 <input checked="" type="checkbox"/> motion before trial 7 <input type="checkbox"/> jury verdict 8 <input type="checkbox"/> directed verdict (jury trial) 9 <input type="checkbox"/> court trial X <input type="checkbox"/> Other					0 <input type="checkbox"/> No monetary award 1 <input type="checkbox"/> \$ _____ only Nearest \$1,000 2 <input type="checkbox"/> \$ _____ and other (indicate on reverse) 3 <input type="checkbox"/> Injunction 4 <input type="checkbox"/> Other, foreclosure, condemnation, remand, etc. 5 <input type="checkbox"/> Costs only					1 <input type="checkbox"/> Consent of parties to magistrate judgment (CCA appeal) 2 <input type="checkbox"/> Consent of parties to magistrate judgment (USDC appeals) 3 <input type="checkbox"/> Special master reference 4 <input type="checkbox"/> All pretrial matters, including dispositive motions 5 <input type="checkbox"/> Report and recommendation on dispositive motions 6 <input type="checkbox"/> All pretrial matters, except dispositive motions 7 <input type="checkbox"/> Full pretrial/settlement conferences 8 <input type="checkbox"/> Non-dispositive motions 0 <input type="checkbox"/> No involvement of magistrate							IV Judgment For: 1 <input type="checkbox"/> Plaintiff 2 <input checked="" type="checkbox"/> Defendant 3 <input type="checkbox"/> Both 4 <input type="checkbox"/> Unknown					VI Involvement Other than Judge or Magistrate 1 <input type="checkbox"/> Arbitrator 2 <input type="checkbox"/> Land Commissioner 3 <input type="checkbox"/> Special master (other than magistrate) 4 <input type="checkbox"/> Other (specify) _____ 0 <input type="checkbox"/> No involvement other than judge or magistrate							SHOW DATES If applicable		Date Issue Joined 01-05-85			Date Pretrial Conference 02-03-85			Date Trial Began			Date Trial Ended			
Simpson, Barbara					The District Construction Co., Inc.																																																																																																			
I Procedural Progress at Termination					II Disposition					III Nature of Judgment					V Involvement of U.S. Magistrate																																																																																									
1 <input type="checkbox"/> before issue joined 2 <input type="checkbox"/> after motion decided but before issue joined 3 <input type="checkbox"/> issue joined, no other court action 4 <input checked="" type="checkbox"/> issue joined, and after judgment of court on motion 5 <input type="checkbox"/> issue joined, and after pretrial conference but before trial 6 <input type="checkbox"/> during court trial 7 <input type="checkbox"/> during jury trial 8 <input type="checkbox"/> after court trial 9 <input type="checkbox"/> after jury trial 0 <input type="checkbox"/> Other (specify on reverse)					0 <input type="checkbox"/> Transfer to other District 1 <input type="checkbox"/> Remanded to state court 2 <input type="checkbox"/> Dismissed for want of prosecution 3 <input type="checkbox"/> Dismissed, discontinued, settled, withdrawn, etc. Judgment on 4 <input type="checkbox"/> Default 5 <input type="checkbox"/> Consent 6 <input checked="" type="checkbox"/> motion before trial 7 <input type="checkbox"/> jury verdict 8 <input type="checkbox"/> directed verdict (jury trial) 9 <input type="checkbox"/> court trial X <input type="checkbox"/> Other					0 <input type="checkbox"/> No monetary award 1 <input type="checkbox"/> \$ _____ only Nearest \$1,000 2 <input type="checkbox"/> \$ _____ and other (indicate on reverse) 3 <input type="checkbox"/> Injunction 4 <input type="checkbox"/> Other, foreclosure, condemnation, remand, etc. 5 <input type="checkbox"/> Costs only					1 <input type="checkbox"/> Consent of parties to magistrate judgment (CCA appeal) 2 <input type="checkbox"/> Consent of parties to magistrate judgment (USDC appeals) 3 <input type="checkbox"/> Special master reference 4 <input type="checkbox"/> All pretrial matters, including dispositive motions 5 <input type="checkbox"/> Report and recommendation on dispositive motions 6 <input type="checkbox"/> All pretrial matters, except dispositive motions 7 <input type="checkbox"/> Full pretrial/settlement conferences 8 <input type="checkbox"/> Non-dispositive motions 0 <input type="checkbox"/> No involvement of magistrate																																																																																									
IV Judgment For: 1 <input type="checkbox"/> Plaintiff 2 <input checked="" type="checkbox"/> Defendant 3 <input type="checkbox"/> Both 4 <input type="checkbox"/> Unknown					VI Involvement Other than Judge or Magistrate 1 <input type="checkbox"/> Arbitrator 2 <input type="checkbox"/> Land Commissioner 3 <input type="checkbox"/> Special master (other than magistrate) 4 <input type="checkbox"/> Other (specify) _____ 0 <input type="checkbox"/> No involvement other than judge or magistrate																																																																																																			
SHOW DATES If applicable		Date Issue Joined 01-05-85			Date Pretrial Conference 02-03-85			Date Trial Began			Date Trial Ended																																																																																													

JS-6 (Rev. 7/80) Mail to: SARD, Administrative Office of the U.S. Courts, Washington, D.C. 20544

EXHIBIT E-5: JS-6 (Rule 23 Allegation)

Transmittal 64, Volume XI
 Title II
 March 1, 1985



EXHIBIT E-6: Diversity of Citizenship Jurisdiction

DIST.	OFF.	DOCKET NUMBER		TERMINATION		J	N/S	O	D		R 23	\$ DEMAND	JUDGE/MAG. NO.	COUNTY										
		YR.	NUMBER	MO.	DAY				YR.	PTF					DEF									
0644	3	85	02110	<div style="border: 1px solid black; width: 100px; height: 100px; margin: 0 auto; display: flex; align-items: center; justify-content: center;"> ↓ </div> 01-03-85 03-03-85		4	385	1				Nearest \$1,000	J 4473 M 44 22	21113										
<table style="width: 100%; border-collapse: collapse;"> <tr> <td style="width: 33%; vertical-align: top;"> <p>Richards, Joy T.</p> <p>I Procedural Progress at Termination</p> <p>1 <input type="checkbox"/> before issue joined</p> <p>2 <input type="checkbox"/> after motion decided but before issue joined</p> <p>3 <input checked="" type="checkbox"/> Issue joined, no other court action</p> <p>4 <input type="checkbox"/> Issue joined, and after judgment of court on motion</p> <p>5 <input type="checkbox"/> Issue joined, and after pretrial conference but before trial</p> <p>6 <input type="checkbox"/> during court trial</p> <p>7 <input type="checkbox"/> during jury trial</p> <p>8 <input type="checkbox"/> after court trial</p> <p>9 <input type="checkbox"/> after jury trial</p> <p>0 <input type="checkbox"/> Other (specify on reverse)</p> </td> <td style="width: 33%; vertical-align: top;"> <p>II Disposition</p> <p>0 <input type="checkbox"/> Transfer to other District</p> <p>1 <input type="checkbox"/> Remanded to state court</p> <p>2 <input checked="" type="checkbox"/> Dismissed for want of prosecution</p> <p>3 <input type="checkbox"/> Dismissed, discontinued, settled, withdrawn, etc.</p> <p style="text-align: center;">Judgment on</p> <p>4 <input type="checkbox"/> Default</p> <p>5 <input type="checkbox"/> Consent</p> <p>6 <input type="checkbox"/> motion before trial</p> <p>7 <input type="checkbox"/> jury verdict</p> <p>8 <input type="checkbox"/> directed verdict (jury trial)</p> <p>9 <input type="checkbox"/> court trial</p> <p>X <input type="checkbox"/> Other</p> </td> <td style="width: 33%; vertical-align: top;"> <p>Suburban Light, Inc.</p> <p>III Nature of Judgment</p> <p>0 <input type="checkbox"/> No monetary award</p> <p>1 <input type="checkbox"/> \$ _____ only Nearest \$1,000</p> <p>2 <input type="checkbox"/> \$ _____ and other (indicate on reverse)</p> <p>3 <input type="checkbox"/> Injunction</p> <p>4 <input type="checkbox"/> Other, foreclosure, condemnation, remand, etc.</p> <p>5 <input type="checkbox"/> Costs only</p> <p>IV Judgment For:</p> <p>1 <input type="checkbox"/> Plaintiff</p> <p>2 <input type="checkbox"/> Defendant</p> <p>3 <input type="checkbox"/> Both</p> <p>4 <input type="checkbox"/> Unknown</p> </td> <td style="width: 33%; vertical-align: top;"> <p>V Involvement of U.S. Magistrate</p> <p>1 <input type="checkbox"/> Consent of parties to magistrate judgment (CCA appeal)</p> <p>2 <input type="checkbox"/> Consent of parties to magistrate judgment (USDC appeals)</p> <p>3 <input type="checkbox"/> Special master reference</p> <p>4 <input type="checkbox"/> All pretrial matters, including dispositive motions</p> <p>5 <input type="checkbox"/> Report and recommendation on dispositive motions</p> <p>6 <input type="checkbox"/> All pretrial matters, except dispositive motions</p> <p>7 <input type="checkbox"/> Full pretrial/settlement conferences</p> <p>8 <input type="checkbox"/> Non-dispositive motions</p> <p>0 <input type="checkbox"/> No involvement of magistrate</p> <p>VI Involvement Other than Judge or Magistrate</p> <p>1 <input type="checkbox"/> Arbitrator</p> <p>2 <input type="checkbox"/> Land Commissioner</p> <p>3 <input type="checkbox"/> Special master (other than magistrate)</p> <p>4 <input type="checkbox"/> Other (specify) _____</p> <p>0 <input type="checkbox"/> No involvement other than judge or magistrate</p> </td> </tr> <tr> <td colspan="2"> <p>SHOW DATES If applicable</p> </td> <td>Date Issue Joined 01-06-85</td> <td>Date Pretrial Conference</td> <td>Date Trial Began</td> <td>Date Trial Ended</td> </tr> </table>															<p>Richards, Joy T.</p> <p>I Procedural Progress at Termination</p> <p>1 <input type="checkbox"/> before issue joined</p> <p>2 <input type="checkbox"/> after motion decided but before issue joined</p> <p>3 <input checked="" type="checkbox"/> Issue joined, no other court action</p> <p>4 <input type="checkbox"/> Issue joined, and after judgment of court on motion</p> <p>5 <input type="checkbox"/> Issue joined, and after pretrial conference but before trial</p> <p>6 <input type="checkbox"/> during court trial</p> <p>7 <input type="checkbox"/> during jury trial</p> <p>8 <input type="checkbox"/> after court trial</p> <p>9 <input type="checkbox"/> after jury trial</p> <p>0 <input type="checkbox"/> Other (specify on reverse)</p>	<p>II Disposition</p> <p>0 <input type="checkbox"/> Transfer to other District</p> <p>1 <input type="checkbox"/> Remanded to state court</p> <p>2 <input checked="" type="checkbox"/> Dismissed for want of prosecution</p> <p>3 <input type="checkbox"/> Dismissed, discontinued, settled, withdrawn, etc.</p> <p style="text-align: center;">Judgment on</p> <p>4 <input type="checkbox"/> Default</p> <p>5 <input type="checkbox"/> Consent</p> <p>6 <input type="checkbox"/> motion before trial</p> <p>7 <input type="checkbox"/> jury verdict</p> <p>8 <input type="checkbox"/> directed verdict (jury trial)</p> <p>9 <input type="checkbox"/> court trial</p> <p>X <input type="checkbox"/> Other</p>	<p>Suburban Light, Inc.</p> <p>III Nature of Judgment</p> <p>0 <input type="checkbox"/> No monetary award</p> <p>1 <input type="checkbox"/> \$ _____ only Nearest \$1,000</p> <p>2 <input type="checkbox"/> \$ _____ and other (indicate on reverse)</p> <p>3 <input type="checkbox"/> Injunction</p> <p>4 <input type="checkbox"/> Other, foreclosure, condemnation, remand, etc.</p> <p>5 <input type="checkbox"/> Costs only</p> <p>IV Judgment For:</p> <p>1 <input type="checkbox"/> Plaintiff</p> <p>2 <input type="checkbox"/> Defendant</p> <p>3 <input type="checkbox"/> Both</p> <p>4 <input type="checkbox"/> Unknown</p>	<p>V Involvement of U.S. Magistrate</p> <p>1 <input type="checkbox"/> Consent of parties to magistrate judgment (CCA appeal)</p> <p>2 <input type="checkbox"/> Consent of parties to magistrate judgment (USDC appeals)</p> <p>3 <input type="checkbox"/> Special master reference</p> <p>4 <input type="checkbox"/> All pretrial matters, including dispositive motions</p> <p>5 <input type="checkbox"/> Report and recommendation on dispositive motions</p> <p>6 <input type="checkbox"/> All pretrial matters, except dispositive motions</p> <p>7 <input type="checkbox"/> Full pretrial/settlement conferences</p> <p>8 <input type="checkbox"/> Non-dispositive motions</p> <p>0 <input type="checkbox"/> No involvement of magistrate</p> <p>VI Involvement Other than Judge or Magistrate</p> <p>1 <input type="checkbox"/> Arbitrator</p> <p>2 <input type="checkbox"/> Land Commissioner</p> <p>3 <input type="checkbox"/> Special master (other than magistrate)</p> <p>4 <input type="checkbox"/> Other (specify) _____</p> <p>0 <input type="checkbox"/> No involvement other than judge or magistrate</p>	<p>SHOW DATES If applicable</p>		Date Issue Joined 01-06-85	Date Pretrial Conference	Date Trial Began	Date Trial Ended
<p>Richards, Joy T.</p> <p>I Procedural Progress at Termination</p> <p>1 <input type="checkbox"/> before issue joined</p> <p>2 <input type="checkbox"/> after motion decided but before issue joined</p> <p>3 <input checked="" type="checkbox"/> Issue joined, no other court action</p> <p>4 <input type="checkbox"/> Issue joined, and after judgment of court on motion</p> <p>5 <input type="checkbox"/> Issue joined, and after pretrial conference but before trial</p> <p>6 <input type="checkbox"/> during court trial</p> <p>7 <input type="checkbox"/> during jury trial</p> <p>8 <input type="checkbox"/> after court trial</p> <p>9 <input type="checkbox"/> after jury trial</p> <p>0 <input type="checkbox"/> Other (specify on reverse)</p>	<p>II Disposition</p> <p>0 <input type="checkbox"/> Transfer to other District</p> <p>1 <input type="checkbox"/> Remanded to state court</p> <p>2 <input checked="" type="checkbox"/> Dismissed for want of prosecution</p> <p>3 <input type="checkbox"/> Dismissed, discontinued, settled, withdrawn, etc.</p> <p style="text-align: center;">Judgment on</p> <p>4 <input type="checkbox"/> Default</p> <p>5 <input type="checkbox"/> Consent</p> <p>6 <input type="checkbox"/> motion before trial</p> <p>7 <input type="checkbox"/> jury verdict</p> <p>8 <input type="checkbox"/> directed verdict (jury trial)</p> <p>9 <input type="checkbox"/> court trial</p> <p>X <input type="checkbox"/> Other</p>	<p>Suburban Light, Inc.</p> <p>III Nature of Judgment</p> <p>0 <input type="checkbox"/> No monetary award</p> <p>1 <input type="checkbox"/> \$ _____ only Nearest \$1,000</p> <p>2 <input type="checkbox"/> \$ _____ and other (indicate on reverse)</p> <p>3 <input type="checkbox"/> Injunction</p> <p>4 <input type="checkbox"/> Other, foreclosure, condemnation, remand, etc.</p> <p>5 <input type="checkbox"/> Costs only</p> <p>IV Judgment For:</p> <p>1 <input type="checkbox"/> Plaintiff</p> <p>2 <input type="checkbox"/> Defendant</p> <p>3 <input type="checkbox"/> Both</p> <p>4 <input type="checkbox"/> Unknown</p>	<p>V Involvement of U.S. Magistrate</p> <p>1 <input type="checkbox"/> Consent of parties to magistrate judgment (CCA appeal)</p> <p>2 <input type="checkbox"/> Consent of parties to magistrate judgment (USDC appeals)</p> <p>3 <input type="checkbox"/> Special master reference</p> <p>4 <input type="checkbox"/> All pretrial matters, including dispositive motions</p> <p>5 <input type="checkbox"/> Report and recommendation on dispositive motions</p> <p>6 <input type="checkbox"/> All pretrial matters, except dispositive motions</p> <p>7 <input type="checkbox"/> Full pretrial/settlement conferences</p> <p>8 <input type="checkbox"/> Non-dispositive motions</p> <p>0 <input type="checkbox"/> No involvement of magistrate</p> <p>VI Involvement Other than Judge or Magistrate</p> <p>1 <input type="checkbox"/> Arbitrator</p> <p>2 <input type="checkbox"/> Land Commissioner</p> <p>3 <input type="checkbox"/> Special master (other than magistrate)</p> <p>4 <input type="checkbox"/> Other (specify) _____</p> <p>0 <input type="checkbox"/> No involvement other than judge or magistrate</p>																					
<p>SHOW DATES If applicable</p>		Date Issue Joined 01-06-85	Date Pretrial Conference	Date Trial Began	Date Trial Ended																			


DIST.	OFF.	DOCKET		TERMINATION			J	N/S	O	D		R	\$ DEMAND	JUDGE/ MAG. NO.		COUNTY																																																																																																																																																																																																																																																																																
		YR.	NUMBER	MO.	DAY	YR.				PTF	DEF			23	J		M																																																																																																																																																																																																																																																																															
0422	3	85	01111	87-99-85 84-99-85			3	442	1			2	Nearest \$1,000	J 2285																																																																																																																																																																																																																																																																																		
<table border="0" style="width: 100%;"> <tr> <td colspan="8"> White, Allison, et. al. </td> <td colspan="9"> City of Richmond, et. al. </td> </tr> <tr> <td colspan="4">I Procedural Progress at Termination</td> <td colspan="4">II Disposition</td> <td colspan="4">III Nature of Judgment</td> <td colspan="5">V Involvement of U.S. Magistrate</td> </tr> <tr> <td>1</td><td><input type="checkbox"/></td><td colspan="2">before issue joined</td> <td>0</td><td><input type="checkbox"/></td><td colspan="2">Transfer to other District</td> <td>0</td><td><input type="checkbox"/></td><td colspan="2">No monetary award</td> <td>1</td><td><input type="checkbox"/></td><td colspan="3">Consent of parties to magistrate judgment (CCA appeal)</td> </tr> <tr> <td>2</td><td><input type="checkbox"/></td><td colspan="2">after motion decided but before issue joined</td> <td>1</td><td><input type="checkbox"/></td><td colspan="2">Remanded to state court</td> <td>1</td><td><input type="checkbox"/></td><td colspan="2">\$ _____ only Nearest \$1,000</td> <td>2</td><td><input type="checkbox"/></td><td colspan="3">Consent of parties to magistrate judgment (USDC appeals)</td> </tr> <tr> <td>3</td><td><input type="checkbox"/></td><td colspan="2">Issue joined, no other court action</td> <td>2</td><td><input type="checkbox"/></td><td colspan="2">Dismissed for want of prosecution</td> <td>2</td><td><input type="checkbox"/></td><td colspan="2">\$ _____ and other (indicate on reverse)</td> <td>3</td><td><input type="checkbox"/></td><td colspan="3">Special master reference</td> </tr> <tr> <td>4</td><td><input type="checkbox"/></td><td colspan="2">Issue joined, and after judgment of court on motion</td> <td>3</td><td><input type="checkbox"/></td><td colspan="2">Dismissed, discontinued, settled, withdrawn, etc.</td> <td>3</td><td><input type="checkbox"/></td><td colspan="2">Injunction</td> <td>4</td><td><input type="checkbox"/></td><td colspan="3">All pretrial matters, including dispositive motions</td> </tr> <tr> <td>5</td><td><input type="checkbox"/></td><td colspan="2">Issue joined, and after pretrial conference but before trial</td> <td colspan="4" style="text-align: center;">Judgment on</td> <td>4</td><td><input type="checkbox"/></td><td colspan="2">Other, foreclosure, condemnation, remand, etc.</td> <td>5</td><td><input type="checkbox"/></td><td colspan="3">Report and recommendation on dispositive motions</td> </tr> <tr> <td>6</td><td><input type="checkbox"/></td><td colspan="2">during court trial</td> <td>4</td><td><input type="checkbox"/></td><td colspan="2">Default</td> <td>5</td><td><input type="checkbox"/></td><td colspan="2">Costs only</td> <td>6</td><td><input type="checkbox"/></td><td colspan="3">All pretrial matters, except dispositive motions</td> </tr> <tr> <td>7</td><td><input type="checkbox"/></td><td colspan="2">during jury trial</td> <td>5</td><td><input type="checkbox"/></td><td colspan="2">Consent</td> <td colspan="4">IV Judgment For:</td> <td>7</td><td><input type="checkbox"/></td><td colspan="3">Full pretrial/settlement conferences</td> </tr> <tr> <td>8</td><td><input checked="" type="checkbox"/></td><td colspan="2">after court trial</td> <td>6</td><td><input type="checkbox"/></td><td colspan="2">motion before trial</td> <td>1</td><td><input type="checkbox"/></td><td colspan="2">Plaintiff</td> <td>8</td><td><input type="checkbox"/></td><td colspan="3">Non-dispositive motions</td> </tr> <tr> <td>9</td><td><input type="checkbox"/></td><td colspan="2">after jury trial</td> <td>7</td><td><input type="checkbox"/></td><td colspan="2">jury verdict</td> <td>2</td><td><input checked="" type="checkbox"/></td><td colspan="2">Defendant</td> <td>9</td><td><input type="checkbox"/></td><td colspan="3">No involvement of magistrate</td> </tr> <tr> <td>0</td><td><input type="checkbox"/></td><td colspan="2">Other (specify on reverse)</td> <td>8</td><td><input type="checkbox"/></td><td colspan="2">directed verdict (jury trial)</td> <td>3</td><td><input type="checkbox"/></td><td colspan="2">Both</td> <td colspan="5">VI Involvement Other than Judge or Magistrate</td> </tr> <tr> <td></td><td></td><td></td><td></td> <td>9</td><td><input checked="" type="checkbox"/></td><td colspan="2">court trial</td> <td>4</td><td><input type="checkbox"/></td><td colspan="2">Unknown</td> <td>1</td><td><input type="checkbox"/></td><td colspan="3">Arbitrator</td> </tr> <tr> <td></td><td></td><td></td><td></td> <td>X</td><td><input type="checkbox"/></td><td colspan="2">Other</td> <td></td><td></td><td></td><td></td> <td>2</td><td><input type="checkbox"/></td><td colspan="3">Land Commissioner</td> </tr> <tr> <td colspan="2">SHOW DATES</td> <td colspan="2">Date Issue Joined</td> <td colspan="2">Date Pretrial Conference</td> <td colspan="2">Date Trial Began</td> <td colspan="2">Date Trial Ended</td> <td colspan="7"></td> </tr> <tr> <td colspan="2">If applicable</td> <td colspan="2">01-29-85</td> <td colspan="2">02-05-85</td> <td colspan="2">03-01-85</td> <td colspan="2">03-20-85</td> <td colspan="7"></td> </tr> </table>																	White, Allison, et. al.								City of Richmond, et. al.									I Procedural Progress at Termination				II Disposition				III Nature of Judgment				V Involvement of U.S. Magistrate					1	<input type="checkbox"/>	before issue joined		0	<input type="checkbox"/>	Transfer to other District		0	<input type="checkbox"/>	No monetary award		1	<input type="checkbox"/>	Consent of parties to magistrate judgment (CCA appeal)			2	<input type="checkbox"/>	after motion decided but before issue joined		1	<input type="checkbox"/>	Remanded to state court		1	<input type="checkbox"/>	\$ _____ only Nearest \$1,000		2	<input type="checkbox"/>	Consent of parties to magistrate judgment (USDC appeals)			3	<input type="checkbox"/>	Issue joined, no other court action		2	<input type="checkbox"/>	Dismissed for want of prosecution		2	<input type="checkbox"/>	\$ _____ and other (indicate on reverse)		3	<input type="checkbox"/>	Special master reference			4	<input type="checkbox"/>	Issue joined, and after judgment of court on motion		3	<input type="checkbox"/>	Dismissed, discontinued, settled, withdrawn, etc.		3	<input type="checkbox"/>	Injunction		4	<input type="checkbox"/>	All pretrial matters, including dispositive motions			5	<input type="checkbox"/>	Issue joined, and after pretrial conference but before trial		Judgment on				4	<input type="checkbox"/>	Other, foreclosure, condemnation, remand, etc.		5	<input type="checkbox"/>	Report and recommendation on dispositive motions			6	<input type="checkbox"/>	during court trial		4	<input type="checkbox"/>	Default		5	<input type="checkbox"/>	Costs only		6	<input type="checkbox"/>	All pretrial matters, except dispositive motions			7	<input type="checkbox"/>	during jury trial		5	<input type="checkbox"/>	Consent		IV Judgment For:				7	<input type="checkbox"/>	Full pretrial/settlement conferences			8	<input checked="" type="checkbox"/>	after court trial		6	<input type="checkbox"/>	motion before trial		1	<input type="checkbox"/>	Plaintiff		8	<input type="checkbox"/>	Non-dispositive motions			9	<input type="checkbox"/>	after jury trial		7	<input type="checkbox"/>	jury verdict		2	<input checked="" type="checkbox"/>	Defendant		9	<input type="checkbox"/>	No involvement of magistrate			0	<input type="checkbox"/>	Other (specify on reverse)		8	<input type="checkbox"/>	directed verdict (jury trial)		3	<input type="checkbox"/>	Both		VI Involvement Other than Judge or Magistrate									9	<input checked="" type="checkbox"/>	court trial		4	<input type="checkbox"/>	Unknown		1	<input type="checkbox"/>	Arbitrator							X	<input type="checkbox"/>	Other						2	<input type="checkbox"/>	Land Commissioner			SHOW DATES		Date Issue Joined		Date Pretrial Conference		Date Trial Began		Date Trial Ended									If applicable		01-29-85		02-05-85		03-01-85		03-20-85								
White, Allison, et. al.								City of Richmond, et. al.																																																																																																																																																																																																																																																																																								
I Procedural Progress at Termination				II Disposition				III Nature of Judgment				V Involvement of U.S. Magistrate																																																																																																																																																																																																																																																																																				
1	<input type="checkbox"/>	before issue joined		0	<input type="checkbox"/>	Transfer to other District		0	<input type="checkbox"/>	No monetary award		1	<input type="checkbox"/>	Consent of parties to magistrate judgment (CCA appeal)																																																																																																																																																																																																																																																																																		
2	<input type="checkbox"/>	after motion decided but before issue joined		1	<input type="checkbox"/>	Remanded to state court		1	<input type="checkbox"/>	\$ _____ only Nearest \$1,000		2	<input type="checkbox"/>	Consent of parties to magistrate judgment (USDC appeals)																																																																																																																																																																																																																																																																																		
3	<input type="checkbox"/>	Issue joined, no other court action		2	<input type="checkbox"/>	Dismissed for want of prosecution		2	<input type="checkbox"/>	\$ _____ and other (indicate on reverse)		3	<input type="checkbox"/>	Special master reference																																																																																																																																																																																																																																																																																		
4	<input type="checkbox"/>	Issue joined, and after judgment of court on motion		3	<input type="checkbox"/>	Dismissed, discontinued, settled, withdrawn, etc.		3	<input type="checkbox"/>	Injunction		4	<input type="checkbox"/>	All pretrial matters, including dispositive motions																																																																																																																																																																																																																																																																																		
5	<input type="checkbox"/>	Issue joined, and after pretrial conference but before trial		Judgment on				4	<input type="checkbox"/>	Other, foreclosure, condemnation, remand, etc.		5	<input type="checkbox"/>	Report and recommendation on dispositive motions																																																																																																																																																																																																																																																																																		
6	<input type="checkbox"/>	during court trial		4	<input type="checkbox"/>	Default		5	<input type="checkbox"/>	Costs only		6	<input type="checkbox"/>	All pretrial matters, except dispositive motions																																																																																																																																																																																																																																																																																		
7	<input type="checkbox"/>	during jury trial		5	<input type="checkbox"/>	Consent		IV Judgment For:				7	<input type="checkbox"/>	Full pretrial/settlement conferences																																																																																																																																																																																																																																																																																		
8	<input checked="" type="checkbox"/>	after court trial		6	<input type="checkbox"/>	motion before trial		1	<input type="checkbox"/>	Plaintiff		8	<input type="checkbox"/>	Non-dispositive motions																																																																																																																																																																																																																																																																																		
9	<input type="checkbox"/>	after jury trial		7	<input type="checkbox"/>	jury verdict		2	<input checked="" type="checkbox"/>	Defendant		9	<input type="checkbox"/>	No involvement of magistrate																																																																																																																																																																																																																																																																																		
0	<input type="checkbox"/>	Other (specify on reverse)		8	<input type="checkbox"/>	directed verdict (jury trial)		3	<input type="checkbox"/>	Both		VI Involvement Other than Judge or Magistrate																																																																																																																																																																																																																																																																																				
				9	<input checked="" type="checkbox"/>	court trial		4	<input type="checkbox"/>	Unknown		1	<input type="checkbox"/>	Arbitrator																																																																																																																																																																																																																																																																																		
				X	<input type="checkbox"/>	Other						2	<input type="checkbox"/>	Land Commissioner																																																																																																																																																																																																																																																																																		
SHOW DATES		Date Issue Joined		Date Pretrial Conference		Date Trial Began		Date Trial Ended																																																																																																																																																																																																																																																																																								
If applicable		01-29-85		02-05-85		03-01-85		03-20-85																																																																																																																																																																																																																																																																																								

JS-6 (Rev. 7/80) Mail to: SARD, Administrative Office of the U.S. Courts, Washington, D.C. 20544

EXHIBIT E-7: Class Action (R 23 dismissed)

Transmittal 64, Volume XI
Title II
March 1, 1985

EXHIBIT E-8: Bankruptcy Appeal

DIST.	OFF.	DOCKET		TERMINATION			J	N/S	O	D		R	\$ DEMAND	JUDGE/MAG. NO.		COUNTY
		YR.	NUMBER	MO.	DAY	YR.				PTF	OFF			23	J	
0647	3	85	05061	<div style="text-align: center;">  01-01-85 05-06-85 </div>			3	422	1				Nearest \$1,000	J 4791	M 4722	39175
Delta Public Library B76-410 Epperson Service, Inc. 09																
I Procedural Progress at Termination 1 <input checked="" type="checkbox"/> before issue joined 2 <input type="checkbox"/> after motion decided but before issue joined 3 <input type="checkbox"/> issue joined, no other court action 4 <input type="checkbox"/> issue joined, and after judgment of court on motion 5 <input type="checkbox"/> issue joined, and after pretrial conference but before trial 6 <input type="checkbox"/> during court trial 7 <input type="checkbox"/> during jury trial 8 <input type="checkbox"/> after court trial 9 <input type="checkbox"/> after jury trial 0 <input type="checkbox"/> Other (specify on reverse)				II Disposition 0 <input type="checkbox"/> Transfer to other District 1 <input type="checkbox"/> Remanded to state court 2 <input type="checkbox"/> Dismissed for want of prosecution 3 <input type="checkbox"/> Dismissed, discontinued, settled, withdrawn, etc. <u>Judgment on</u> 4 <input type="checkbox"/> Default 5 <input checked="" type="checkbox"/> Consent 6 <input type="checkbox"/> motion before trial 7 <input type="checkbox"/> jury verdict 8 <input type="checkbox"/> directed verdict (jury trial) 9 <input type="checkbox"/> court trial X <input type="checkbox"/> Other				III Nature of Judgment 0 <input type="checkbox"/> No monetary award 1 <input checked="" type="checkbox"/> \$ <u>2</u> only Nearest \$1,000 2 <input type="checkbox"/> \$ _____ and other (indicate on reverse) 3 <input type="checkbox"/> Injunction 4 <input type="checkbox"/> Other, foreclosure, condemnation, remand, etc. 5 <input type="checkbox"/> Costs only IV Judgment For: 1 <input type="checkbox"/> Plaintiff 2 <input checked="" type="checkbox"/> Defendant 3 <input type="checkbox"/> Both 4 <input type="checkbox"/> Unknown				V Involvement of U.S. Magistrate 1 <input type="checkbox"/> Consent of parties to magistrate judgment (CCA appeal*) 2 <input type="checkbox"/> Consent of parties to magistrate judgment (USDC appeals) 3 <input type="checkbox"/> Special master reference 4 <input type="checkbox"/> All pretrial matters, including dispositive motions 5 <input type="checkbox"/> Report and recommendation on dispositive motions 6 <input type="checkbox"/> All pretrial matters, except dispositive motions 7 <input type="checkbox"/> Full pretrial/settlement conferences 8 <input type="checkbox"/> Non-dispositive motions 0 <input type="checkbox"/> No involvement of magistrate VI Involvement Other than Judge or Magistrate 1 <input type="checkbox"/> Arbitrator 2 <input type="checkbox"/> Land Commissioner 3 <input type="checkbox"/> Special master (other than magistrate) 4 <input type="checkbox"/> Other (specify) _____ 0 <input type="checkbox"/> No involvement other than judge or magistrate				
SHOW DATES If applicable		Date Issue Joined	Date Pretrial Conference	Date Trial Began	Date Trial Ended											
JS-6 (Rev. 7/80) Mail to: SARD, Administrative Office of the U.S. Courts, Washington, D.C. 20544																



DIST.	OFF.	DOCKET YR. NUMBER	TERMINATION MO. DAY YR.	J	N/S	O	D PTF DEF	R 23	\$ DEMAND	JUDGE/ MAG. NO.	COUNTY
113A	8	85 00060	02-25-85 05-01-85	3	423	1			Nearest \$1,000	J 113A M	12093

I Procedural Progress at Termination 1 <input type="checkbox"/> before issue joined 2 <input type="checkbox"/> after motion decided but before issue joined 3 <input type="checkbox"/> issue joined, no other court action 4 <input type="checkbox"/> issue joined, and after judgment of court on motion 5 <input checked="" type="checkbox"/> issue joined, and after pretrial conference but before trial 6 <input type="checkbox"/> during court trial 7 <input type="checkbox"/> during jury trial 8 <input type="checkbox"/> after court trial 9 <input type="checkbox"/> after jury trial 0 <input type="checkbox"/> Other (specify on reverse)		II Disposition 0 <input type="checkbox"/> Transfer to other District 1 <input type="checkbox"/> Remanded to state court 2 <input type="checkbox"/> Dismissed for want of prosecution 3 <input type="checkbox"/> Dismissed, discontinued, settled, withdrawn, etc. Judgment on 4 <input type="checkbox"/> Default 5 <input type="checkbox"/> Consent 6 <input checked="" type="checkbox"/> motion before trial 7 <input type="checkbox"/> jury verdict 8 <input type="checkbox"/> directed verdict (jury trial) 9 <input type="checkbox"/> court trial X <input type="checkbox"/> Other		III Nature of Judgment 0 <input type="checkbox"/> No monetary award 1 <input checked="" type="checkbox"/> \$ 3 only Nearest \$1,000 2 <input type="checkbox"/> \$ _____ and other (indicate on reverse) 3 <input type="checkbox"/> Injunction 4 <input type="checkbox"/> Other, foreclosure, condemnation, remand, etc. 5 <input type="checkbox"/> Costs only IV Judgment For: 1 <input checked="" type="checkbox"/> Plaintiff 2 <input type="checkbox"/> Defendant 3 <input type="checkbox"/> Both 4 <input type="checkbox"/> Unknown		V Involvement of U.S. Magistrate 1 <input type="checkbox"/> Consent of parties to magistrate judgment (CCA appeal) 2 <input type="checkbox"/> Consent of parties to magistrate judgment (USDC appeals) 3 <input type="checkbox"/> Special master reference 4 <input type="checkbox"/> All pretrial matters, including dispositive motions 5 <input type="checkbox"/> Report and recommendation on dispositive motions 6 <input type="checkbox"/> All pretrial matters, except dispositive motions 7 <input type="checkbox"/> Full pretrial/settlement conferences 8 <input type="checkbox"/> Non-dispositive motions 0 <input type="checkbox"/> No involvement of magistrate VI Involvement Other than Judge or Magistrate 1 <input type="checkbox"/> Arbitrator 2 <input type="checkbox"/> Land Commissioner 3 <input type="checkbox"/> Special master (other than magistrate) 4 <input type="checkbox"/> Other (specify) _____ 0 <input type="checkbox"/> No involvement other than judge or magistrate	
---	--	---	--	--	--	--	--

SHOW DATES If applicable	Date Issue Joined 02-05-85	Date Pretrial Conference 02-20-85	Date Trial Began 04-01-85	Date Trial Ended 05-01-85
-----------------------------	-------------------------------	--------------------------------------	------------------------------	------------------------------

JS-6 (Rev. 7/80) Mail to: SARD, Administrative Office of the U.S. Courts, Washington, D.C. 20544

EXHIBIT E-9: Bankruptcy Withdrawal

Transmittal 64, Volume XI
 Title II
 March 1, 1985

EXHIBIT E-10: Intradistrict Transfer

DIST.	OFF.	DOCKET		TERMINATION			J	N/S	O	D	R	\$ DEMAND	JUDGE/ MAG. NO.	COUNTY	
		YR.	NUMBER	MO.	DAY	YR.									PTF
0210	3	85	01123									Nearest \$1,000	J 1096	50007	
0210	2	85	01789				4	190	1	1	4	160	M 10 Z7.		
				01-02-85											
				05-06-85											
West, James							Johns, Thomas								
I Procedural Progress at Termination			II Disposition			III Nature of Judgment			IV Judgment For:			V Involvement of U.S. Magistrate			
1 <input type="checkbox"/> before issue joined			0 <input type="checkbox"/> Transfer to other District			0 <input type="checkbox"/> No monetary award			1 <input checked="" type="checkbox"/> Plaintiff			1 <input type="checkbox"/> Consent of parties to magistrate judgment (CCA appeal ¹)			
2 <input type="checkbox"/> after motion decided but before issue joined			1 <input type="checkbox"/> Remanded to state court			1 <input checked="" type="checkbox"/> \$ 145 only Nearest \$1,000			2 <input type="checkbox"/> Defendant			2 <input type="checkbox"/> Consent of parties to magistrate judgment (USDC appeals)			
3 <input type="checkbox"/> issue joined, no other court action			2 <input type="checkbox"/> Dismissed for want of prosecution			2 <input type="checkbox"/> \$ _____ and other (indicate on reverse)			3 <input type="checkbox"/> Both			3 <input type="checkbox"/> Special master reference			
4 <input type="checkbox"/> issue joined, and after judgment of court on motion			3 <input type="checkbox"/> Dismissed, discontinued, settled, withdrawn, etc.			3 <input type="checkbox"/> Injunction			4 <input type="checkbox"/> Unknown			4 <input type="checkbox"/> All pretrial matters, including dispositive motions			
5 <input type="checkbox"/> issue joined, and after pretrial conference but before trial			Judgment on			4 <input type="checkbox"/> Other, foreclosure, condemnation, remand, etc.			5 <input type="checkbox"/> Costs only			5 <input type="checkbox"/> Report and recommendation on dispositive motions			
6 <input type="checkbox"/> during court trial			4 <input type="checkbox"/> Default			IV Judgment For:			6 <input type="checkbox"/> Plaintiff			6 <input type="checkbox"/> All pretrial matters, except dispositive motions			
7 <input type="checkbox"/> during jury trial			5 <input type="checkbox"/> Consent			1 <input checked="" type="checkbox"/> Plaintiff			7 <input type="checkbox"/> Defendant			7 <input type="checkbox"/> Full pretrial/settlement conferences			
8 <input checked="" type="checkbox"/> after court trial			6 <input type="checkbox"/> motion before trial			2 <input type="checkbox"/> Defendant			8 <input type="checkbox"/> Both			8 <input type="checkbox"/> Non-dispositive motions			
9 <input type="checkbox"/> after jury trial			7 <input type="checkbox"/> jury verdict			3 <input type="checkbox"/> Both			9 <input type="checkbox"/> Other (specify on reverse)			9 <input type="checkbox"/> No involvement of magistrate			
0 <input type="checkbox"/> Other (specify on reverse)			8 <input type="checkbox"/> directed verdict (jury trial)			4 <input type="checkbox"/> Unknown						VI Involvement Other than Judge or Magistrate			
			9 <input checked="" type="checkbox"/> court trial									1 <input type="checkbox"/> Arbitrator			
			X <input type="checkbox"/> Other									2 <input type="checkbox"/> Land Commissioner			
												3 <input type="checkbox"/> Special master (other than magistrate)			
												4 <input type="checkbox"/> Other (specify)			
												0 <input type="checkbox"/> No involvement other than judge or magistrate			
SHOW DATES		Date Issue Joined		Date Pretrial Conference		Date Trial Began		Date Trial Ended							
If applicable		01-05-85		02-06-85		03-03-85		05-06-85							

EXHIBIT E-11: Determining Procedural Progress at Termination

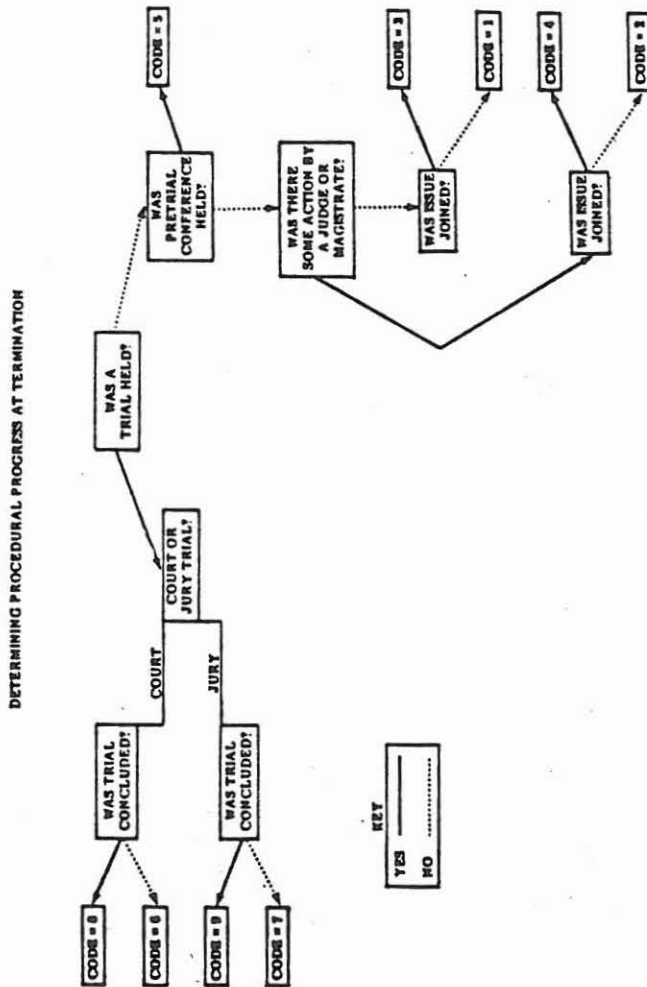


EXHIBIT F: DC-111 District Court Docket

DIST. OFF		DOCKET NUMBER		FILING DATE MO DAY YEAR		J	N/A	D	R	S DEMAND	JUDGE MAG. NO.	COUNTY	JURY DEM	DOCKET NUMBER
PLAINTIFFS							DEFENDANTS							
CAUSE (CITE THE U.S. CIVIL STATUTE UNDER WHICH THE CASE IS FILED AND WRITE A BRIEF STATEMENT OF CAUSE)														
ATTORNEYS														
<input type="checkbox"/> CHECK HERE IF CASE WAS FILED IN FORMA PAUPERIS		FILING FEES PAID										STATISTICAL CARD		
		DATE	RECEIPT NUMBER	C.D. NUMBER		CARD	DATE FILED							

UNITED STATES DISTRICT COURT DOCKET DC 111 (Rev. 7-81)

Transmittal 64, Volume XI
Title II
March 1, 1985

EXHIBIT G-1: JS-44A Civil Cover Sheet

JS 44A
(Rev. 1/83)

CIVIL COVER SHEET

The JS-44 civil cover sheet and the information contained herein neither replace nor supplement the filing and service of pleadings or other papers as required by law, except as provided by local rules of court. This form, approved by the Judicial Conference of the United States in September, 1974, is required for the use of the Clerk of Court for the purpose of initiating the civil docket sheet (For more detailed instructions, see separate instruction sheet.)

PLAINTIFFS

DEFENDANTS

COUNTY OF RESIDENCE OF FIRST LISTED PLAINTIFF _____
(EXCEPT IN U.S. PLAINTIFF CASES)

COUNTY OF RESIDENCE OF FIRST LISTED DEFENDANT _____
(IN U.S. PLAINTIFF CASES ONLY)
NOTE: IN LAND CONDEMNATION CASES, USE THE LOCATION OF THE TRACT OF LAND INVOLVED

ATTORNEYS (FIRM NAME, ADDRESS, AND TELEPHONE NUMBER)

ATTORNEYS (IF KNOWN)

(PLACE AN IN ONE BOX ONLY)

BASIS OF JURISDICTION

1 U.S. PLAINTIFF 2 U.S. DEFENDANT 3 FEDERAL QUESTION (U.S. NOT A PARTY) 4 DIVERSITY

IF DIVERSITY, INDICATE CITIZENSHIP BELOW: (28 USC 1332, 1441)

CAUSE OF ACTION (CITE THE U.S. CIVIL STATUTE UNDER WHICH YOU ARE FILING AND WRITE A BRIEF STATEMENT OF CAUSE).

(PLACE AN IN ONE BOX ONLY)

NATURE OF SUIT

		ACTIONS UNDER STATUTES		
		CIVIL RIGHTS	FORFEITURE/PENALTY	OTHER STATUTES
CONTRACT <input type="checkbox"/> 110 INSURANCE <input type="checkbox"/> 120 MARINE <input type="checkbox"/> 130 MILLER ACT <input type="checkbox"/> 140 NEGOTIABLE INSTRUMENT <input type="checkbox"/> 150 RECOVERY OF OVERPAYMENT & ENFORCEMENT OF JUDGMENT <input type="checkbox"/> 151 MEDICARE ACT <input type="checkbox"/> 152 RECOVERY OF DEFAULTED STUDENT LOANS <input type="checkbox"/> 153 RECOVERY OF OVERPAYMENT OF VETERANS BENEFITS <input type="checkbox"/> 160 STOCKHOLDERS SUITS <input type="checkbox"/> 180 OTHER CONTRACT <input type="checkbox"/> 185 CONTRACT PRODUCT LIABILITY REAL PROPERTY <input type="checkbox"/> 210 CONDEMNATION <input type="checkbox"/> 220 FORECLOSURE <input type="checkbox"/> 230 RENT LEASE & EJECTMENT <input type="checkbox"/> 240 TORTS TO LAND <input type="checkbox"/> 245 TORT PRODUCT LIABILITY <input type="checkbox"/> 260 ALL OTHER REAL PROPERTY	TORTS PERSONAL INJURY <input type="checkbox"/> 310 AIRPLANE <input type="checkbox"/> 315 AIRPLANE PRODUCT LIABILITY <input type="checkbox"/> 320 ASSAULT, LIBEL & SLANDER <input type="checkbox"/> 330 FEDERAL EMPLOYERS LIABILITY <input type="checkbox"/> 340 MARINE <input type="checkbox"/> 345 MARINE PRODUCT LIABILITY <input type="checkbox"/> 350 MOTOR VEHICLE <input type="checkbox"/> 355 MOTOR VEHICLE PRODUCT LIABILITY <input type="checkbox"/> 360 OTHER PERSONAL INJURY <input type="checkbox"/> 365 PERSONAL INJURY PRODUCT LIABILITY PERSONAL PROPERTY <input type="checkbox"/> 370 OTHER FRAUD <input type="checkbox"/> 371 TRUTH IN LENDING <input type="checkbox"/> 380 OTHER PERSONAL PROPERTY DAMAGE <input type="checkbox"/> 385 PROPERTY DAMAGE PRODUCT LIABILITY	<input type="checkbox"/> 441 VOTING <input type="checkbox"/> 442 JOBS <input type="checkbox"/> 443 ACCOMMODATIONS <input type="checkbox"/> 444 WELFARE <input type="checkbox"/> 448 OTHER CIVIL RIGHTS PRISONER PETITIONS <input type="checkbox"/> 510 VACATE SENTENCE (2255) <input type="checkbox"/> 520 PAROLE COMMISSION REVIEW <input type="checkbox"/> 530 HABEAS CORPUS <input type="checkbox"/> 540 MANDAMUS & OTHER <input type="checkbox"/> 550 CIVIL RIGHTS	<input type="checkbox"/> 610 AGRICULTURE <input type="checkbox"/> 620 FOOD & DRUG <input type="checkbox"/> 630 LIQUOR LAWS <input type="checkbox"/> 640 R.R. & TRUCK <input type="checkbox"/> 650 AIRLINE REGS <input type="checkbox"/> 660 OCCUPATIONAL SAFETY/HEALTH <input type="checkbox"/> 690 OTHER LABOR <input type="checkbox"/> 710 FAIR LABOR STANDARDS <input type="checkbox"/> 720 LABOR/MGMT RELATIONS <input type="checkbox"/> 730 LABOR/MGMT. REPORTING & DISCLOSURE ACT <input type="checkbox"/> 740 RAILWAY LABOR ACT <input type="checkbox"/> 790 OTHER LABOR LITIGATION <input type="checkbox"/> 791 EMPLOYEE RETIREMENT INCOME SECURITY ACT PROPERTY RIGHTS <input type="checkbox"/> 820 COPYRIGHT <input type="checkbox"/> 830 PATENT <input type="checkbox"/> 840 TRADEMARK	<input type="checkbox"/> 400 STATE REAPPORTIONMENT <input type="checkbox"/> 410 ANTI-TRUST BANKRUPTCY <input type="checkbox"/> 420 TRUSTEE <input type="checkbox"/> 421 TRANSFER (9150) <input type="checkbox"/> 422 APPEAL (801) <input type="checkbox"/> 430 BANKS AND BANKING <input type="checkbox"/> 450 COMMERCE ICC RATES ETC <input type="checkbox"/> 460 DEPORTATION <input type="checkbox"/> 810 SELECTIVE SERVICE <input type="checkbox"/> 850 SECURITIES COMMODITIES EXCHANGE SOCIAL SECURITY <input type="checkbox"/> 861 HIA (1395(f)) <input type="checkbox"/> 862 BLACK LUNG (923) <input type="checkbox"/> 863 DWIC (405(g)) <input type="checkbox"/> 863 DWW (405(g)) <input type="checkbox"/> 864 SSID T&W XV <input type="checkbox"/> 865 RSI (405 (g)) <input type="checkbox"/> 870 TAXES <input type="checkbox"/> 871 IRS-THIRD PARTY <input type="checkbox"/> 875 CUSTOMER CHALLENGE 12 USC 3410 <input type="checkbox"/> 891 AGRICULTURAL ACTS <input type="checkbox"/> 892 ECONOMIC STABILIZATION ACT <input type="checkbox"/> 893 ENVIRONMENTAL MATTERS <input type="checkbox"/> 894 ENERGY ALLOCATION ACT <input type="checkbox"/> 895 FREEDOM OF INFORMATION ACT <input type="checkbox"/> 900 APPEAL OF FEE DETERMINATION UNDER EQUAL ACCESS TO JUSTICE ACT <input type="checkbox"/> 950 CONSTITUTIONALITY OF STATE STATUTES <input type="checkbox"/> 970 NARA TITLE II <input type="checkbox"/> 980 OTHER STATUTORY ACTIONS

UNITED STATES DISTRICT COURT

(Continued on Reverse Side)

Transmittal 64, Volume XI
 Title II
 March 1, 1985

EXHIBIT G-1: JS-44A Civil Cover Sheet (continued)

JS 44A
 (Rev. 1, 83)

CIVIL COVER SHEET (Reverse Side)

The JS-44 civil cover sheet and the information contained herein neither replace nor supplement the filing and service of pleadings or other papers as required by law, except as provided by local rules of court. This form, approved by the Judicial Conference of the United States in September 1974, is required for the use of the Clerk of Court for the purpose of initiating the civil docket sheet. (For more detailed instructions, see separate instruction sheet.)

INSTRUCTIONS: After completing the front side of form JS 44A, complete the information requested below.

PLACE AN <input checked="" type="checkbox"/> IN ONE BOX ONLY		ORIGIN		
<input type="checkbox"/> 1 Original Proceeding	<input type="checkbox"/> 2 Removed from State Court	<input type="checkbox"/> 3 Remanded from Appellate Court	<input type="checkbox"/> 4 Reinstated Reopened	<input type="checkbox"/> 5 Transferred From (Specify Dist.)
				<input type="checkbox"/> 6 Multidistrict Litigation
				<input type="checkbox"/> 7 Appeal to District Judge from Magistrate Judgment
CITIZENSHIP OF PRINCIPAL PARTIES (IF DIVERSITY)		Check / Fill in if demanded in complaint:		
	PTF DEF	<input type="checkbox"/> CHECK IF THIS IS A CLASS ACTION UNDER F.R.C.P. 23	DEMAND \$	OTHER
CITIZEN OF THIS STATE	<input type="checkbox"/> 1 <input type="checkbox"/> 1	REMARKS		
INCORPORATED THIS STATE	<input type="checkbox"/> 2 <input type="checkbox"/> 2			
FOREIGN CORPORATION-PRINCIPAL PLACE OF BUSINESS IN (STATE)	<input type="checkbox"/> 3 <input type="checkbox"/> 3			
OTHER NON-CITIZEN OF THIS STATE	<input type="checkbox"/> 4 <input type="checkbox"/> 4			
Check YES only if demanded in complaint:				
JURY DEMAND: <input type="checkbox"/> YES <input type="checkbox"/> NO				
DATE		SIGNATURE OF ATTORNEY OF RECORD		

COMMENTS (Use if additional space is required):



Transmittal 64, Volume XI
Title II
March 1, 1985

EXHIBIT G-2: JS-44B Civil Cover Sheet

JS 44B
(REV. 1/83)

CIVIL COVER SHEET

The JS-44 civil cover sheet and the information contained herein neither replace nor supplement the filing and service of pleading or other papers as required by law, except as provided by local rules of court. This form, approved by the Judicial Conference of the United States in September 1974, is required for the use of the Clerk of Court for the purpose of initiating the civil docket sheet. (For more detailed instructions, see separate instruction sheet.)

PLAINTIFFS

DEFENDANTS

COUNTY OF RESIDENCE OF FIRST LISTED PLAINTIFF _____
(EXCEPT IN U.S. PLAINTIFF CASES)

COUNTY OF RESIDENCE OF FIRST LISTED DEFENDANT _____
(IN U.S. PLAINTIFF CASES ONLY)
NOTE: IN LAND CONDEMNATION CASES, USE THE LOCATION OF THE TRACT OF LAND INVOLVED

ATTORNEYS (FIRM NAME, ADDRESS, AND TELEPHONE NUMBER)

ATTORNEYS (IF KNOWN)

(PLACE AN IN ONE BOX ONLY)

BASIS OF JURISDICTION

1 U.S. PLAINTIFF 2 U.S. DEFENDANT 3 FEDERAL QUESTION (U.S. NOT A PARTY) 5 LOCAL QUESTION

CAUSE OF ACTION (CITE THE U.S. CIVIL STATUTE UNDER WHICH YOU ARE FILING AND WRITE A BRIEF STATEMENT OF CAUSE)

(PLACE AN IN ONE BOX ONLY)

NATURE OF SUIT

CONTRACT		TORTS		ACTIONS UNDER STATUTES		
		PERSONAL INJURY		CIVIL RIGHTS	FORFEITURE/PENALTY	OTHER STATUTES
<input type="checkbox"/> 110 INSURANCE	<input type="checkbox"/> 310 AIRPLANE	<input type="checkbox"/> 441 VOTING	<input type="checkbox"/> 610 AGRICULTURE	<input type="checkbox"/> 400 STATE REAPPORTIONMENT	<input type="checkbox"/> 875 CUSTOMER CHALLENGE 12 USC 3410	
<input type="checkbox"/> 120 MARINE	<input type="checkbox"/> 315 AIRPLANE PRODUCT LIABILITY	<input type="checkbox"/> 442 JOBS	<input type="checkbox"/> 620 FOOD & DRUG	<input type="checkbox"/> 410 ANTI-TRUST BANKRUPTCY	<input type="checkbox"/> 891 AGRICULTURAL ACTS	
<input type="checkbox"/> 130 MILLER ACT	<input type="checkbox"/> 320 ASSAULT, LIBEL & SLANDER	<input type="checkbox"/> 443 ACCOMMODATIONS	<input type="checkbox"/> 630 LIQUOR LAWS	<input type="checkbox"/> 420 TRUSTEE	<input type="checkbox"/> 892 ECONOMIC STABILIZATION ACT	
<input type="checkbox"/> 140 NEGOTIABLE INSTRUMENT	<input type="checkbox"/> 330 FEDERAL EMPLOYERS' LIABILITY	<input type="checkbox"/> 444 WELFARE	<input type="checkbox"/> 640 R.R. & TRUCK	<input type="checkbox"/> 421 TRANSFER (915b)	<input type="checkbox"/> 893 ENVIRONMENTAL MATTERS	
<input type="checkbox"/> 150 RECOVERY OF OVERPAYMENT & ENFORCEMENT OF JUDGMENT	<input type="checkbox"/> 340 MARINE	<input type="checkbox"/> 440 OTHER CIVIL RIGHTS	<input type="checkbox"/> 650 AIRLINE REGS	<input type="checkbox"/> 422 APPEAL (801)	<input type="checkbox"/> 894 ENERGY ALLOCATION ACT	
<input type="checkbox"/> 151 MEDICARE ACT	<input type="checkbox"/> 345 MARINE PRODUCT LIABILITY		<input type="checkbox"/> 660 OCCUPATIONAL SAFETY/HEALTH	<input type="checkbox"/> 430 BANKS AND BANKING	<input type="checkbox"/> 895 FREEDOM OF INFORMATION ACT	
<input type="checkbox"/> 152 RECOVERY OF DEFAULTED STUDENT LOANS	<input type="checkbox"/> 350 MOTOR VEHICLE PRODUCT LIABILITY		<input type="checkbox"/> 690 OTHER	<input type="checkbox"/> 450 COMMERCE ICC RATES, ETC	<input type="checkbox"/> 900 APPEAL OF FEE DETERMINATION UNDER EQUAL ACCESS TO JUSTICE ACT	
<input type="checkbox"/> 153 RECOVERY OF OVERPAYMENT OF VETERANS BENEFITS	<input type="checkbox"/> 355 MOTOR VEHICLE PRODUCT LIABILITY	PRISONER PETITIONS	LABOR	<input type="checkbox"/> 460 DEPORTATION	<input type="checkbox"/> 950 CONSTITUTIONALITY OF STATE STATUTES	
<input type="checkbox"/> 160 STOCKHOLDERS SUITS	<input type="checkbox"/> 360 OTHER PERSONAL INJURY	<input type="checkbox"/> 310 VACATE SENTENCE (2255)	<input type="checkbox"/> 710 FAIR LABOR STANDARDS	<input type="checkbox"/> 810 SELECTIVE SERVICE	<input type="checkbox"/> 970 NARA TITLE II	
<input type="checkbox"/> 190 OTHER CONTRACT	<input type="checkbox"/> 365 PERSONAL INJURY PRODUCT LIABILITY	<input type="checkbox"/> 320 PAROLE COMMISSION REVIEW	<input type="checkbox"/> 720 LABOR/MGMT RELATIONS	<input type="checkbox"/> 850 SECURITIES COMMODITIES EXCHANGE SOCIAL SECURITY	<input type="checkbox"/> 890 OTHER STATUTORY ACTIONS	
<input type="checkbox"/> 195 CONTRACT PRODUCT LIABILITY		<input type="checkbox"/> 330 HABEAS CORPUS	<input type="checkbox"/> 730 LABOR/MGMT REPORTING & DISCLOSURE ACT	<input type="checkbox"/> 861 HIA (1395R)		
		<input type="checkbox"/> 340 MANDAMUS & OTHER	<input type="checkbox"/> 740 RAILWAY LABOR ACT	<input type="checkbox"/> 862 BLACK LUNG (923)		
		<input type="checkbox"/> 350 CIVIL RIGHTS	<input type="checkbox"/> 780 OTHER LABOR LITIGATION	<input type="checkbox"/> 863 DMC (405(g))		
			<input type="checkbox"/> 781 EMPLOYEE RETIREMENT INCOME SECURITY ACT	<input type="checkbox"/> 864 DWM (405(g))		
			PROPERTY RIGHTS	<input type="checkbox"/> 865 SSI (405(x))		
			<input type="checkbox"/> 820 COPYRIGHT	<input type="checkbox"/> 865 RSI (405(g)) TAX SUITS		
			<input type="checkbox"/> 830 PATENT	<input type="checkbox"/> 870 TAXES		
			<input type="checkbox"/> 840 TRADEMARK	<input type="checkbox"/> 871 IRS-THIRD PARTY		

UNITED STATES DISTRICT COURT

(Continued on Reverse Side)

Transmittal 64, Volume XI
 Title II
 March 1, 1985

EXHIBIT G-2: JS-44B Civil Cover Sheet (continued)

JS 44B
 (Rev. 1/83)

CIVIL COVER SHEET (Reverse Side)

The JS-44 civil cover sheet and the information contained herein neither replace nor supplement the filing and service of pleadings or other papers as required by law, except as provided by local rules of court. This form, approved by the Judicial Conference of the United States in September 1974, is required for the use of the Clerk of Court for the purpose of initiating the civil docket sheet. (For more detailed instructions, see separate instruction sheet.)

INSTRUCTIONS: After completing the front side of form JS 44B, complete the information requested below.

(PLACE AN <input checked="" type="checkbox"/> IN ONE BOX ONLY) ORIGIN		LOCAL QUESTION	
<input type="checkbox"/> 1 ORIGINAL PROCEEDING	<input type="checkbox"/> 2 REMOVED FROM STATE COURT	<input type="checkbox"/> 3 REMANDED FROM APPELLATE COURT	<input type="checkbox"/> 4 REINSTATED OR REOPENED
<input type="checkbox"/> 5 TRANSFERRED FROM (SPECIFY DIST.)	<input type="checkbox"/> 6 MULTIDISTRICT LITIGATION	<input type="checkbox"/> 7 APPEAL TO DISTRICT JUDGE FROM MAGISTRATE JUDGMENT	
<i>Check/Fill in if demanded in complaint</i>		<i>Check YES only if demanded in complaint:</i>	
<input type="checkbox"/> CHECK IF THIS IS A CLASS ACTION UNDER F.R.C.P. 23	DEMAND \$	OTHER	JURY DEMAND <input type="checkbox"/> YES <input type="checkbox"/> NO

REMARKS

DATE	SIGNATURE OF ATTORNEY OF RECORD
------	---------------------------------

COMMENTS (Use additional space if required)

Transmittal 64, Volume XI
 Title II
 March 1, 1985

EXHIBIT G-3: JS-44C Civil Cover Sheet

JS-44C
 (Rev. 12-84)

CIVIL COVER SHEET

The JS-44 civil cover sheet and the information contained herein neither replace nor supplement the filing and service of pleadings or other papers as required by law, except as provided by local rules of court. This form, approved by the Judicial Conference of the United States in September 1974, is required for the use of the Clerk of Court for the purpose of initiating the civil docket sheet. (SEE INSTRUCTIONS ON THE REVERSE OF THE FORM.)

<p>I (a) PLAINTIFFS</p>	<p>DEFENDANTS</p>
<p>(b) COUNTY OF RESIDENCE OF FIRST LISTED PLAINTIFF (EXCEPT IN U.S. PLAINTIFF CASES)</p>	<p>COUNTY OF RESIDENCE OF FIRST LISTED DEFENDANT (IN U.S. PLAINTIFF CASES ONLY) NOTE: IN LAND CONDEMNATION CASES, USE THE LOCATION OF THE TRACT OF LAND INVOLVED</p>
<p>(c) ATTORNEYS (FIRM NAME, ADDRESS, AND TELEPHONE NUMBER)</p>	<p>ATTORNEYS (IF KNOWN)</p>

<p>II. BASIS OF JURISDICTION (PLACE AN X IN ONE BOX ONLY)</p> <p><input type="checkbox"/> 1 U.S. Government Plaintiff</p> <p><input type="checkbox"/> 2 U.S. Government Defendant</p>	<p><input type="checkbox"/> 3 Federal Question (U.S. Government Not a Party)</p> <p><input type="checkbox"/> 4 Diversity (Indicate Citizenship of Parties in item III)</p>	<p>III. CITIZENSHIP OF PRINCIPAL PARTIES (PLACE AN X IN ONE BOX FOR PLAINTIFF AND ONE BOX FOR DEFENDANT) (For Diversity Cases Only)</p> <table style="width:100%;"> <tr> <td style="text-align: center;">PTF</td> <td style="text-align: center;">DEF</td> <td style="text-align: center;">PTF</td> <td style="text-align: center;">DEF</td> </tr> <tr> <td>Citizen of This State</td> <td><input type="checkbox"/> 1 <input type="checkbox"/> 1</td> <td>Incorporated or Principal Place of Business in This State</td> <td><input type="checkbox"/> 4 <input type="checkbox"/> 4</td> </tr> <tr> <td>Citizen of Another State</td> <td><input type="checkbox"/> 2 <input type="checkbox"/> 2</td> <td>Incorporated and Principal Place of Business in Another State</td> <td><input type="checkbox"/> 5 <input type="checkbox"/> 5</td> </tr> <tr> <td>Citizen or Subject of a Foreign Country</td> <td><input type="checkbox"/> 3 <input type="checkbox"/> 3</td> <td>Foreign Nation</td> <td><input type="checkbox"/> 6 <input type="checkbox"/> 6</td> </tr> </table>	PTF	DEF	PTF	DEF	Citizen of This State	<input type="checkbox"/> 1 <input type="checkbox"/> 1	Incorporated or Principal Place of Business in This State	<input type="checkbox"/> 4 <input type="checkbox"/> 4	Citizen of Another State	<input type="checkbox"/> 2 <input type="checkbox"/> 2	Incorporated and Principal Place of Business in Another State	<input type="checkbox"/> 5 <input type="checkbox"/> 5	Citizen or Subject of a Foreign Country	<input type="checkbox"/> 3 <input type="checkbox"/> 3	Foreign Nation	<input type="checkbox"/> 6 <input type="checkbox"/> 6
PTF	DEF	PTF	DEF															
Citizen of This State	<input type="checkbox"/> 1 <input type="checkbox"/> 1	Incorporated or Principal Place of Business in This State	<input type="checkbox"/> 4 <input type="checkbox"/> 4															
Citizen of Another State	<input type="checkbox"/> 2 <input type="checkbox"/> 2	Incorporated and Principal Place of Business in Another State	<input type="checkbox"/> 5 <input type="checkbox"/> 5															
Citizen or Subject of a Foreign Country	<input type="checkbox"/> 3 <input type="checkbox"/> 3	Foreign Nation	<input type="checkbox"/> 6 <input type="checkbox"/> 6															

IV. CAUSE OF ACTION (CITE THE U.S. CIVIL STATUTE UNDER WHICH YOU ARE PLUNG AND WRITE A BRIEF STATEMENT OF CAUSE. DO NOT CITE JURISDICTIONAL STATUTES UNLESS DIVERSITY)

V. NATURE OF SUIT (PLACE AN X IN ONE BOX ONLY)

CONTRACT	PERSONAL INJURY	PERSONAL INJURY	FORFEITURE/PENALTY	SANKRUPTCY	OTHER STATUTES
<input type="checkbox"/> 110 Insurance	<input type="checkbox"/> 310 Airplane	<input type="checkbox"/> 362 Personal Injury - Medical Malpractice	<input type="checkbox"/> 610 Agriculture	<input type="checkbox"/> 422 Absentee	<input type="checkbox"/> 400 State Readjustment
<input type="checkbox"/> 120 Marine	<input type="checkbox"/> 315 Airplane Product Liability	<input type="checkbox"/> 365 Personal Injury - Product Liability	<input type="checkbox"/> 620 Food & Drug	<input type="checkbox"/> 423 Withdrawal	<input type="checkbox"/> 410 Antitrust
<input type="checkbox"/> 130 Miner Act	<input type="checkbox"/> 320 Assault, Libel & Slander	<input type="checkbox"/> 368 Asbestos Personal Injury - Product Liability	<input type="checkbox"/> 630 Labor Laws	<input type="checkbox"/> 28 USC 157	<input type="checkbox"/> 420 Banks and Banking
<input type="checkbox"/> 140 Negotiable Instrument	<input type="checkbox"/> 330 Federal Employers' Liability	<input type="checkbox"/> 370 Other Fraud	<input type="checkbox"/> 640 R.R. & Truck	PROPERTY RIGHTS	
<input type="checkbox"/> 150 Mortgages of Development	<input type="checkbox"/> 340 Marine	<input type="checkbox"/> 371 Truth in Lending	<input type="checkbox"/> 650 Mining Regs	<input type="checkbox"/> 820 Copyrights	<input type="checkbox"/> 450 Commercial/ICC Rates-etc
<input type="checkbox"/> 151 Medicare Act	<input type="checkbox"/> 345 Marine Product Liability	<input type="checkbox"/> 380 Other Personal Property Damage	<input type="checkbox"/> 660 Occupational Safety/Health	<input type="checkbox"/> 830 Patent	<input type="checkbox"/> 460 Deportation
<input type="checkbox"/> 152 Recovery of Delinquent Student Loans	<input type="checkbox"/> 350 Motor Vehicle Product Liability	<input type="checkbox"/> 385 Property Damage - Product Liability	<input type="checkbox"/> 690 Other	<input type="checkbox"/> 840 Trademark	<input type="checkbox"/> 810 Selective Service
<input type="checkbox"/> 153 Recovery of Development of Veteran's Benefits	<input type="checkbox"/> 355 Motor Vehicle Product Liability	LABOR		SOCIAL SECURITY	
<input type="checkbox"/> 160 Stockholders' Suits	<input type="checkbox"/> 360 Other Personal Injury	<input type="checkbox"/> 710 Fair Labor Standards Act	<input type="checkbox"/> 720 Labor/Mgmt. Relations	<input type="checkbox"/> 861 MHA (1991)	<input type="checkbox"/> 850 Securities/Commodities Exchange
<input type="checkbox"/> 190 Other Contract Liability	<input type="checkbox"/> 440 Other Civil Rights	<input type="checkbox"/> 730 Labor Mgmt. Reporting & Disclosure Act	<input type="checkbox"/> 740 Railway Labor Act	<input type="checkbox"/> 862 Black Lung (REB)	<input type="checkbox"/> 891 Agriculture Acts
<input type="checkbox"/> 195 Contract Product Liability	<input type="checkbox"/> 441 Voting	<input type="checkbox"/> 750 Labor Mgmt. Reporting & Disclosure Act	<input type="checkbox"/> 790 Other Labor Litigation	<input type="checkbox"/> 863 DMV (ADVIS)	<input type="checkbox"/> 892 Economic Stabilization Act
<input type="checkbox"/> 210 Land Condemnation	<input type="checkbox"/> 442 Employment Accommodations	<input type="checkbox"/> 760 Labor Mgmt. Reporting & Disclosure Act	<input type="checkbox"/> 791 Empl. Ret. Inc. Security Act	<input type="checkbox"/> 864 SSID (Title XVI)	<input type="checkbox"/> 893 Environmental Matters
<input type="checkbox"/> 220 Foreclosure	<input type="checkbox"/> 443 Accommodations	<input type="checkbox"/> 770 Labor Mgmt. Reporting & Disclosure Act		<input type="checkbox"/> 865 MSP (ADVIS)	<input type="checkbox"/> 894 Energy Allocation Act
<input type="checkbox"/> 230 Rent Lease & Ejectment	<input type="checkbox"/> 444 Welfare	<input type="checkbox"/> 780 Labor Mgmt. Reporting & Disclosure Act		FEDERAL TAX SUITS	
<input type="checkbox"/> 240 Tort - To Land	<input type="checkbox"/> 445 Other Civil Rights	<input type="checkbox"/> 790 Other Labor Litigation		<input type="checkbox"/> 870 Taxes	<input type="checkbox"/> 895 Freedom of Information Act
<input type="checkbox"/> 245 Tort Product Liability	<input type="checkbox"/> 446 Other Civil Rights	<input type="checkbox"/> 791 Empl. Ret. Inc. Security Act		<input type="checkbox"/> 871 IRS Third Party	<input type="checkbox"/> 900 Appeal of Fee Determination Under Equal Access to Justice
<input type="checkbox"/> 250 All Other Real Property				<input type="checkbox"/> 875 Customer Challenge	<input type="checkbox"/> 950 Constitutionality of State Statutes
				<input type="checkbox"/> 12 USC 3410	<input type="checkbox"/> 990 Other Statutory Actions

VI. ORIGIN (PLACE AN X IN ONE BOX ONLY)

<input type="checkbox"/> 1 Original Proceeding	<input type="checkbox"/> 2 Removed from State Court	<input type="checkbox"/> 3 Remanded from Appellate Court	<input type="checkbox"/> 4 Reinstated or Reopened	<input type="checkbox"/> 5 Transferred from another district (specify)	<input type="checkbox"/> 6 Multidistrict Litigation	<input type="checkbox"/> 7 Appeal to District Judge from Magistrate Judgment
--	---	--	---	--	---	--

VII. REQUESTED IN COMPLAINT:

CHECK IF THIS IS A CLASS ACTION UNDER F.R.C.P. 23: YES NO

DEMAND \$ _____

JURY DEMAND: YES NO

VIII. RELATED CASE(S) IF ANY: (See instructions)

IF ANY: _____ JUDGE: _____ DOCKET NUMBER: _____

DATE: _____ SIGNATURE OF ATTORNEY OF RECORD: _____

UNITED STATES DISTRICT COURT

**EXHIBIT H: JS-9 Monthly Report of Civil Cases
 by the Clerk of Court**

JS 9 ©
 (Rev. 11/84)

**MONTHLY REPORT OF CIVIL CASES
 BY THE CLERK OF COURT**

UNITED STATES DISTRICT COURT FOR

Connecticut DISTRICT 0205 CODE

PART I: MOVEMENT OF CIVIL CASES FOR THE MONTH OF January 19 85

SEE
 INSTRUCTIONS
 BELOW

1. Cases pending at the close of preceding month.	4065
2. Total cases filed during this month.	212
3. Total cases terminated this month.	211
4. Cases pending at close of this month.	4066

**PART II: NUMBER OF CIVIL CASES ASSIGNED TO INDIVIDUAL JUDGES/MAGISTRATES DURING
 MONTH AND THE TOTAL NUMBERS PENDING AT END OF MONTH**

JUDGE/MAGISTRATE	NUMBER OF CASES		JUDGE/MAGISTRATE	NUMBER OF CASES	
	ASSIGNED DURING MONTH	PENDING AT END OF MONTH		ASSIGNED DURING MONTH	PENDING AT END OF MONTH
(A)	(B)	(C)	(A)	(B)	(C)
Brown, Joseph	15	177			
Stone, Harry	24	919			
Fox, Karen	28	258			
Johns, Steven	35	479			
Little, Jean	30	493			
Steinberg, Tim	29	531			
Ali,	24	465			
Lopez, Maria	25	542			
Unassigned	2	2			
			ASSIGNED		
			UNASSIGNED		2
			TOTAL PENDING		4066

NOTE: Column "C" of the current report should be equal to the total of Column "C" from the previous report plus the number of new assignments (Column B of current report) less the number terminated or transferred to other judges during the current month.

Total civil cases for which final proceedings are still pending as of the end of month.

INSTRUCTIONS FOR

PART I

Line 1 of this report must agree with line 4 of the report for the preceding month.
 Line 2 must equal the number of JS 5 forms and line 3 must equal the number of JS 6 forms submitted.
 Lines 2 and 3 are to include forms used to report multidistrict litigation pursuant to 28 U.S.C. 1407.

PART II

If there is not enough space in PART II for all judges'/magistrates' names, use an additional form.

Transmittal 64, Volume XI
 Title II
 March 1, 1985

EXHIBIT H: (continued)

PART III

MONTHLY REPORT OF WITHIN-DISTRICT TRANSFERS
 (DO NOT submit amended JS 5's for within-district transfers.)

CASES ORIGINALLY FILED IN:			TRANSFERS TO:			
OFFICE CODE	DOCKET NO.	ORIGIN CODE	OFFICE CODE	DOCKET NO.	ORIGIN CODE	DATE
2	85-00007	2	3	85-00007	2	1/3/85
3	85-00023	1	4	85-00036	1	1/15/85

If the sequence of docket numbers of cases filed is broken for any reason except because of a within-district transfer (listed above) please list the docket number omitted and the reason therefore in the space below

2	85-00051	1	Enforcement of IRS summons

PART IV

Report on Civil Cases in Which a Judicial Officer Imposed Sanctions As Defined in Rules 11, 16 and 37, Federal Rules of Civil Procedure

None this month Yes (attach a copy of the appropriate court order(s).)

INSTRUCTIONS: FOR

PART III
 For all cases transferred from one office to another within the district, enter the office, docket number and origin for the transferring office. Enter the same data, including the date, for the receiving office. For all cases assigned new docket numbers, enter the new docket number on the JS 6 Form. Do not submit new JS 5's for within-district transfers.

PART IV
 If no sanctions were imposed this month pursuant to Rules 11, 16 or 37, F.R.Cv.P., mark None. If sanctions were imposed, mark Yes and attach a copy of the appropriate court order for each case.

Mail to: STATISTICAL ANALYSIS AND REPORTS DIVISION ADMINISTRATIVE OFFICE OF THE U.S. COURTS WASHINGTON, D.C. 20544 ATTN: CIVIL STATISTICS CC: CIRCUIT EXECUTIVE	PERSON SUBMITTING REPORT Ms. Julia Baxter TELEPHONE NUMBER (FTS) FTS 555-1234
---	--

FURNISH ONLY ONE REPORT COVERING ALL DIVISIONS IN YOUR DISTRICT

EXHIBIT I: JS-9C Monthly Report of Judge and Magistrate Reassignments In Pending Civil Cases

JS-9C
 (10/83) ©

Central District of CA
 Reporting District

January 1985
 Report Month

**MONTHLY REPORT OF JUDGE AND MAGISTRATE REASSIGNMENTS
 IN PENDING CIVIL CASES***

- Directions:
1. Reflect data on district, office, docket number, and origin exactly as shown on the current pending file.
 2. Indicate in the appropriate space the code of the judge or magistrate to whom the case was reassigned. Space is also provided for entry of the code of the former judge or magistrate (shaded areas), if desired by the court; this is not required for processing reassignments, but may be of value to the court as a written record of the prior assignment.
 3. Attach this report to the JS-9 Monthly Report of Civil Cases.

DISTRICT CODE	OFFICE CODE	DOCKET NUMBER	ORIGIN CODE	OLD JUDGE CODE	NEW JUDGE CODE	OLD MAGIS-TRATE CODE	NEW MAGIS-TRATE CODE	AO USE ONLY
0973	2	85-00104	1	7301	7302			
	2	85-01061	2			73AZ	73AQ	

* This report is exclusively for judge and magistrate reassignments in civil cases that will be pending at the end of the report month. Judge or magistrate code changes to any cases terminated during the report month or prior months should be requested by separate memorandum.
 Please use the reverse side of this form if additional space is required.

EXHIBIT J: Nature of Suit Codes

CIVIL NATURE OF SUIT CODES¹

<u>CONTRACT</u>		<u>CIVIL RIGHTS</u>	
• 100	Indemnity on admiralty cases	440	Other Civil Rights
110	Insurance	441	Voting
120	Marine	442	Jobs
130	Miller Act	443	Accommodations
140	Negotiable instruments	444	Welfare
150	Recovery of overpayments and enforcement of judgments	<u>PRISONER PETITIONS</u>	
151	Recovery of overpayments under the Medicare Act	• 510	Vacate sentence (2255)
152	Recovery of defaulted student loans	• 520	Parole Board Review
153	Recovery of overpayment of veterans benefits	530	Habeas Corpus
160	Stockholders suits	540	Mandamus and other
190	Other contract actions	550	Prisoner - Civil Rights
• 191	Employee relations	<u>FORFEITURE AND PENALTY</u>	
• 192	State Fair Trade Act	610	Agriculture Acts
• 193	Hospital Care Act	620	Food and Drug Acts
195	Contract product liability	630	Liquor Laws
<u>REAL PROPERTY</u>		640	Railroad and trucks
• 21X	Land Condemnation	650	Airline regulations
210	Land Condemnation	660	Occupational safety/health
220	Foreclosure	690	Other forfeiture and penalty suits
230	Rent, lease, ejection	<u>LABOR LAWS</u>	
240	Torts to land	710	Fair Labor Standards Act
245	Tort - product liability	720	Labor/Management Relations Act
290	Other real property actions	730	Labor/Management Reporting and Disclosure Act
<u>TORTS - Personal Injury</u>		740	Railway Labor Act
310	Airplane	• 750	Welfare Pension Plan disclosure
315	Airplane product liability	790	Other labor litigation
320	Assault, libel and slander	791	Employee Retirement Income Security Act of 1974
330	Federal Employers' liability	<u>PROPERTY RIGHTS</u>	
340	Marine	820	Copyright
345	Marine - product liability	830	Patent
350	Motor vehicle	840	Trademark
355	Motor vehicle - product liability	<u>SOCIAL SECURITY</u>	
360	Other personal injury	• 860	Social Security (before 7/1/78)
• 361	Workmen's Compensation - (Industrial Accident Board)	861	HIA (42 USC 1395f.(b))
362	Personal injury - medical malpractice	862	Black Lung (30 USC 923)
365	Personal injury - product liability	863	DIWC (42 USC 405(g))
368	Asbestos personal injury - product liability	863	DIWW (42 USC 405(g))
<u>TORTS - Personal Property Damage</u>		864	SSID Title XVI
370	Other Fraud	865	BSI (42 USC 405(g))
371	Truth in Lending	<u>OTHER STATUTES</u>	
380	Other personal property damage	400	State re-apportionment
385	Property damage - product liability	410	Antitrust
<u>OTHER STATUTES</u>		• 420	Bankruptcy trustee
400	State re-apportionment	• 421	Bankruptcy Transfer Rule 915(b)
410	Antitrust	422	Bankruptcy Appeals Rule 801
• 420	Bankruptcy trustee	423	Withdrawal
• 421	Bankruptcy Transfer Rule 915(b)	430	Banks and Banking
422	Bankruptcy Appeals Rule 801	450	Interstate Commerce
423	Withdrawal	460	Deportation
430	Banks and Banking	• 461	Deportation - Review
450	Interstate Commerce	• 470	Antitrust - electrical equipment
460	Deportation	810	Selective Service
• 461	Deportation - Review	650	Securities, Commodities, Exchange
• 470	Antitrust - electrical equipment	870	Tax Suits
810	Selective Service	• 871	IRS - Third Party Suits (26 USC 7609)
650	Securities, Commodities, Exchange	875	Customer Challenge (12 USC 3410)
<u>LOCAL QUESTION</u>		• 880	Review or Enforcement
910	Domestic relations	890	Other Statutory Actions
920	Insanity	891	Agricultural Acts
930	Probate	892	Economic Stabilization Act
940	Substitute trustee	893	Environmental Matters
990	Other	894	Energy Allocation Act
992	Local Appeal	895	Freedom of Information Act of 1974
		909	Appeal of Fee Determination Under Equal Access to Justice Act
		• 950	Constitutionality of state statutes
		• 970	NARA, Title III

¹ All nature of suit codes used since December 1968.
 • Nature of suit code discontinued.

