



# Wireless Card Setup Instructions

May 2009

[Windows XP]

Page 1 of 2

This document describes how to configure your wireless card using the Windows XP “zero-config” utility. If, for some reason, your card won’t work using the zero-config utility, general instructions are available from lab consultants for configuring your card using its native client utility.

## Table of Contents

Register your laptop.....	1
Using the Windows XP Zero-Configuration Utility .....	1

### Register your laptop \* *required* \*

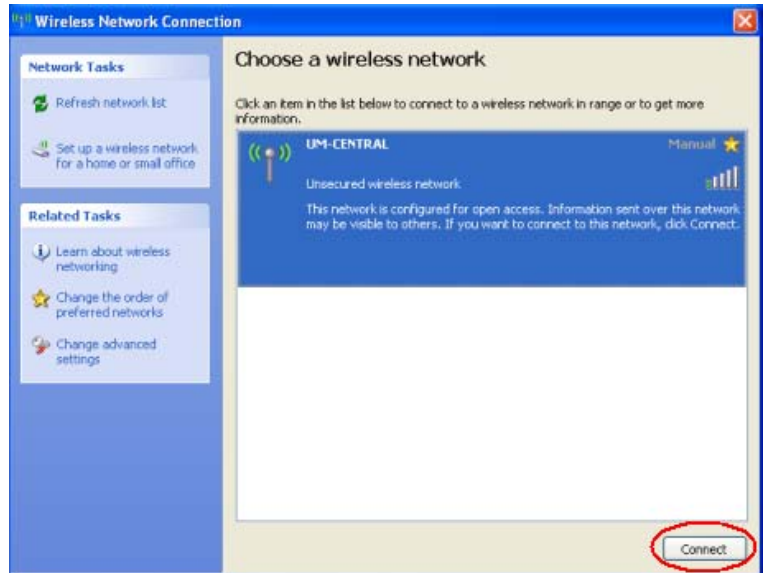
As soon as you have a wireless connection, register your laptop at <http://www.law.umich.edu/currentstudents/informationtechnology/laptops/Pages/Networkregistration.aspx>. With a registered laptop you will be able to access the Law School wireless network without having to log in. If you don’t have a wireless connection, follow the instructions below to get one.

### Using the Windows XP Zero-Configuration Utility

1. **External wireless card:** Confirm it is plugged into your computer.  
**Internal card:** Confirm it is turned on.
2. Double-click the Wireless Internet icon in your system tray. (If you don’t see the tray icon, click **Start | Control Panel |** double-click on **Network Connections**. Then right-click the **Wireless Network Connection** and choose **View Available Wireless Networks**).

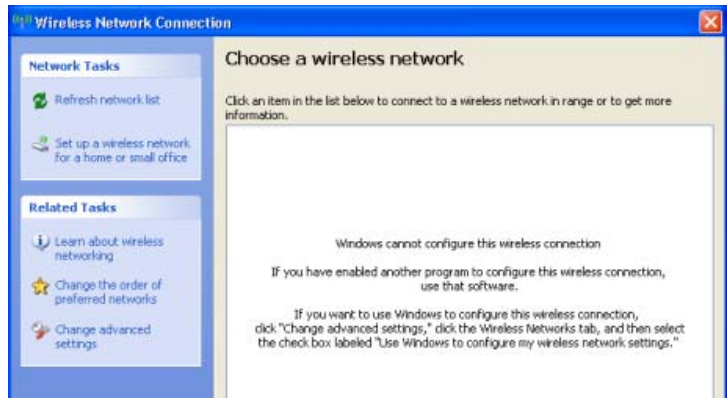


3. You should see the **UM-CENTRAL** network appear in the network list. Click the **Connect** button to connect.

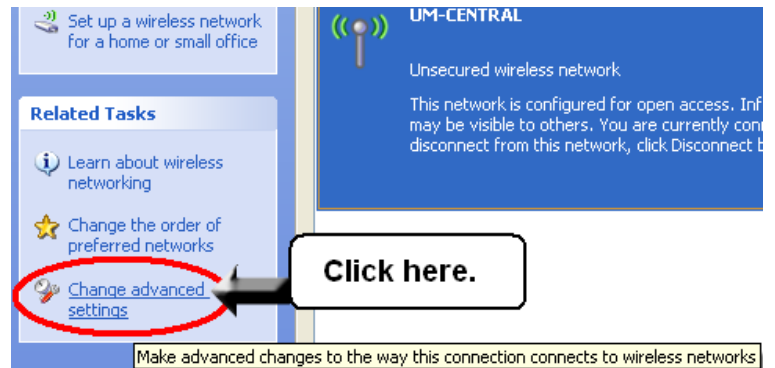


- \* If you see a message stating that **“Windows cannot configure this wireless connection...”** you may be using a native client utility program to configure your wireless connections.

If you need help on **how to configure a native client program**, please see a lab consultant.

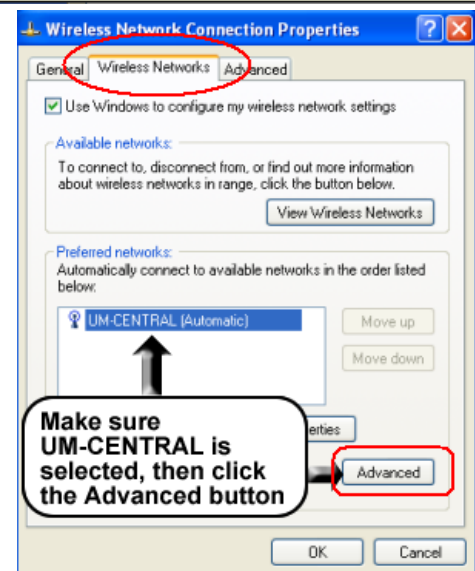


4. Once you are connected, click on **Change advanced settings**.



5. Click the **Wireless Networks** tab.

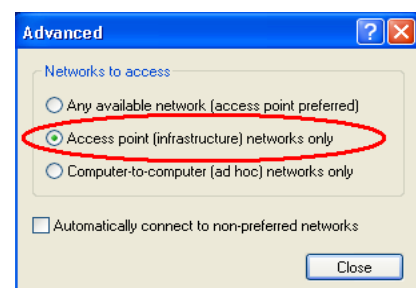
6. Make sure that **UM-CENTRAL** is selected under the *Preferred Networks* heading.



7. Click the **Advanced** button at the bottom.

8. Click the radio button next to **Access point (infrastructure) networks only**. This helps keep a good wireless signal as it reduces the amount of signal interference.

9. Click **Close**.  
10. Click **OK**.



**Don't forget to register your laptop!**

<http://www.law.umich.edu/currentstudents/informationtechnology/laptops/Pages/Networkregistration.aspx>.